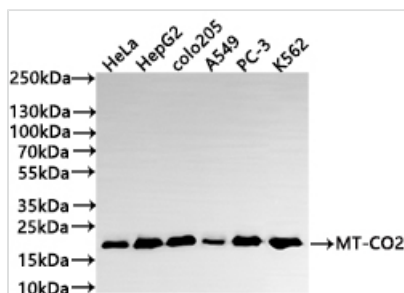




MT-CO2 Recombinant Monoclonal Antibody

Product Code	CSB-RA963831A0HU
Storage	Upon receipt, store at -20°C or -80°C. Avoid repeated freeze.
Uniprot No.	P00403
Immunogen	A synthesized peptide derived from human MT-CO2
Species Reactivity	Human
Tested Applications	ELISA, WB, IHC; Recommended dilution: WB:1:500-1:2000, IHC:1:50-1:200
Form	Liquid
Conjugate	Non-conjugated
Storage Buffer	Rabbit IgG in 10mM phosphate buffered saline , pH 7.4, 150mM sodium chloride, 0.05% BSA, 0.02% sodium azide and 50% glycerol.
Purification Method	Affinity-chromatography
Isotype	Rabbit IgG
Clonality	Monoclonal
Product Type	Recombinant Antibody
Immunogen Species	Homo sapiens (Human)
Target Names	MT-CO2
Clone No.	2D5

Image



Western Blot

Positive WB detected in: HeLa whole cell lysate(30µg), HepG2 whole cell lysate(30µg), COLO205 whole cell lysate(30µg), A549 whole cell lysate, PC-3 whole cell lysate(30µg), K562 whole cell lysate(30µg)

All lanes: MT-CO2 antibody at 1:1000

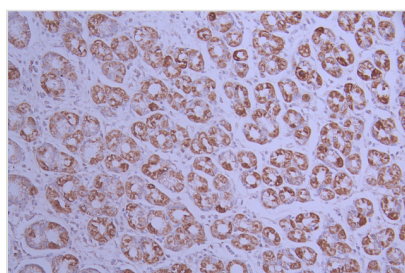
Secondary

Goat polyclonal to rabbit IgG at 1/50000 dilution

Predicted band size: 26 kDa

Observed band size: 21 kDa

Exposure time: 1min



IHC image of CSB-RA963831A0HU diluted at 1:100 and staining in paraffin-embedded human stomach tissue performed on a Leica Bond™ system. After dewaxing and hydration, antigen retrieval was mediated by high pressure in a citrate buffer (pH 6.0). Section was blocked with 10% normal goat serum 30min at RT. Then primary antibody (1% BSA) was incubated at 4°C overnight. The primary is detected by a Goat anti-rabbit polymer IgG labeled by HRP and visualized using 0.05% DAB.



Usage

For Research Use Only. Not for use in diagnostic or therapeutic procedures.