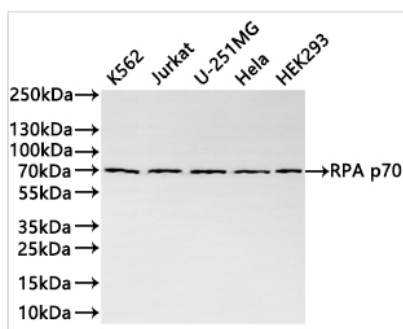




# RPA1 Recombinant Monoclonal Antibody

|                            |                                                                                                                               |
|----------------------------|-------------------------------------------------------------------------------------------------------------------------------|
| <b>Product Code</b>        | CSB-RA072639A0HU                                                                                                              |
| <b>Storage</b>             | Upon receipt, store at -20°C or -80°C. Avoid repeated freeze.                                                                 |
| <b>Uniprot No.</b>         | P27694                                                                                                                        |
| <b>Immunogen</b>           | A synthesized peptide derived from human RPA1                                                                                 |
| <b>Species Reactivity</b>  | Human                                                                                                                         |
| <b>Tested Applications</b> | ELISA, WB, IF, FC; Recommended dilution: WB:1:500-1:2000, IF:1:50-1:200, FC:1:50-1:200                                        |
| <b>Form</b>                | Liquid                                                                                                                        |
| <b>Conjugate</b>           | Non-conjugated                                                                                                                |
| <b>Storage Buffer</b>      | Rabbit IgG in 10mM phosphate buffered saline , pH 7.4, 150mM sodium chloride, 0.05% BSA, 0.02% sodium azide and 50% glycerol. |
| <b>Purification Method</b> | Affinity-chromatography                                                                                                       |
| <b>Isotype</b>             | Rabbit IgG                                                                                                                    |
| <b>Clonality</b>           | Monoclonal                                                                                                                    |
| <b>Product Type</b>        | Recombinant Antibody                                                                                                          |
| <b>Immunogen Species</b>   | Homo sapiens (Human)                                                                                                          |
| <b>Target Names</b>        | RPA1                                                                                                                          |
| <b>Clone No.</b>           | 16F6                                                                                                                          |

## Image



### Western Blot

Positive WB detected in: K562 whole cell lysate(20µg), Jurkat whole cell lysate(20µg), U-251MG whole cell lysate(20µg), HeLa whole cell lysate(20µg), HEK293 whole cell lysate(20µg)

All lanes: RPA p70 antibody at 1:1000

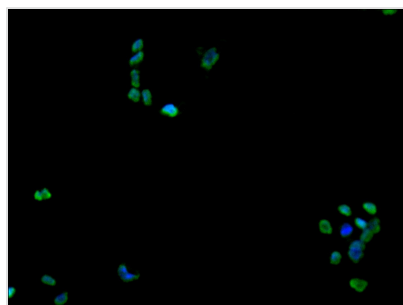
### Secondary

Goat polyclonal to rabbit IgG at 1/40000 dilution

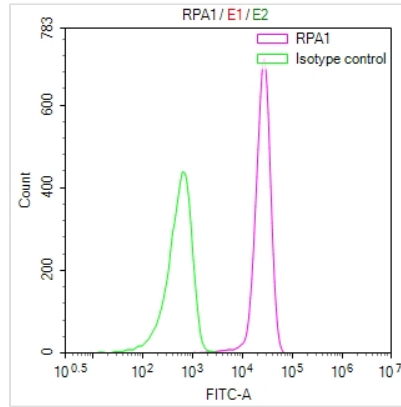
Predicted band size: 68 kDa

Observed band size: 70 kDa

Exposure time?2min



Immunofluorescence staining of A-431 cell with CSB-RA072639A0HU at 1:50, counter-stained with DAPI. The cells were fixed in 4% formaldehyde, permeabilized using 0.2% Triton X-100 and blocked in 10% normal Goat Serum. The cells were then incubated with the antibody overnight at 4°C. The secondary antibody was Alexa Fluor 488-conjugated AffiniPure Goat Anti-Rabbit IgG(H+L).



Overlay Peak curve showing jurkat cells stained with CSB-RA072639A0HU (red line) at 1:100. The cells were fixed in 4% formaldehyde and permeated by 0.2% TritonX-100 for 10min. Then 10% normal goat serum to block non-specific protein-protein interactions followed by the antibody (1ug/1\*10<sup>6</sup>cells) for 45min at 4?. The secondary antibody used was FITC-conjugated goat anti-rabbit IgG (H+L) at 1/200 dilution for 35min at 4?. Control antibody (green line) was Rabbit IgG (1ug/1\*10<sup>6</sup>cells) used under the same conditions. Acquisition of >10,000 events was performed.

**Usage**

For Research Use Only. Not for use in diagnostic or therapeutic procedures.