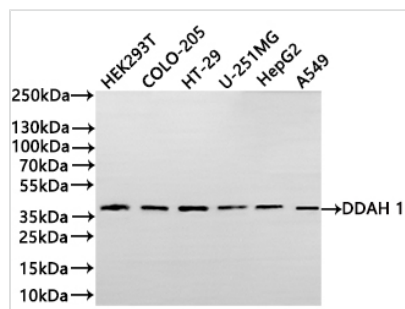




DDAH1 Recombinant Monoclonal Antibody

Product Code	CSB-RA547452A0HU
Storage	Upon receipt, store at -20°C or -80°C. Avoid repeated freeze.
Uniprot No.	O94760
Immunogen	A synthesized peptide derived from human DDAH1
Species Reactivity	Human
Tested Applications	ELISA, WB; Recommended dilution: WB:1:500-1:2000
Form	Liquid
Conjugate	Non-conjugated
Storage Buffer	Rabbit IgG in 10mM phosphate buffered saline , pH 7.4, 150mM sodium chloride, 0.05% BSA, 0.02% sodium azide and 50% glycerol.
Purification Method	Affinity-chromatography
Isotype	Rabbit IgG
Clonality	Monoclonal
Product Type	Recombinant Antibody
Immunogen Species	Homo sapiens (Human)
Target Names	DDAH1
Clone No.	18D12

Image



Western Blot

Positive WB detected in: HEK293T whole cell lysate(20µg),COLO-205 whole cell lysate(20µg),HT-29 whole cell lysate(20µg), U-251MG whole cell lysate(20µg),HepG2 whole cell lysate(20µg),A549 whole cell lysate(20µg)
All lanes: DDAH 1 antibody at 1:1000

Secondary

Goat polyclonal to rabbit IgG at 1/40000 dilution
Predicted band size: 31 kDa
Observed band size: 37 kDa
Exposure time?2min

Usage

For Research Use Only. Not for use in diagnostic or therapeutic procedures.