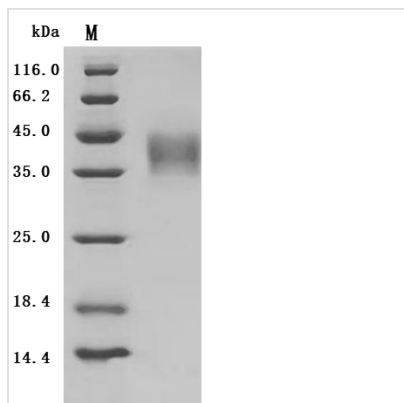




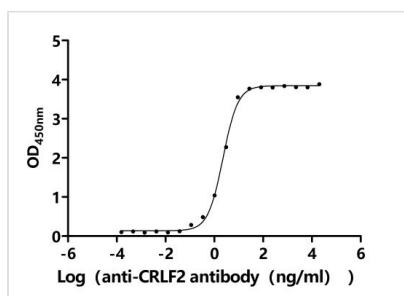
Recombinant *Macaca fascicularis* cytokine receptor-like factor 2 (CRLF2), partial (Active)

Product Code	CSB-MP5357MOVd7
Abbreviation	Recombinant Cynomolgus monkey CRLF2 protein, partial (Active)
Storage	The shelf life is related to many factors, storage state, buffer ingredients, storage temperature and the stability of the protein itself. Generally, the shelf life of liquid form is 6 months at -20°C/-80°C. The shelf life of lyophilized form is 12 months at -20°C/-80°C.
Uniprot No.	XP_045239630.1
Form	Lyophilized powder
Storage Buffer	Lyophilized from a 0.2 µm sterile filtered PBS, 6% Trehalose, pH 7.4
Product Type	Recombinant Protein
Immunogen Species	<i>Macaca fascicularis</i> (Crab-eating macaque) (Cynomolgus monkey)
Biological Activity	Measured by its binding ability in a functional ELISA. Immobilized <i>Macaca fascicularis</i> CRLF2 at 2 µg/mL can bind Anti-CRLF2 recombinant antibody (CSB-RA005983MA1HU). The EC50 is 2.079-2.450 ng/mL.
Purity	Greater than 95% as determined by SDS-PAGE.
Sequence	QVATGEGGLQIQIMYFNLETVQVTWNASHYPRSNLSFHYKFSRDEAYDQCTVYI LQEGHTSGCLLDAQQDDILYFSIRNGTHPVFTASRWIFYLKPSSPKQVSFS WHQDAVTLTCSDSLRYGLLYEVQYRSPFDTEWQSKQENTCNVTIEDLDAEK YAFRARVKAMEDAYGPDYTPSDWSEVTCWQRGKTRDSCPEPRTPPKPKLSK
Source	Mammalian cell
Target Names	CRLF2
Expression Region	23-231aa
Notes	Repeated freezing and thawing is not recommended. Store working aliquots at 4°C for up to one week.
Tag Info	C-terminal 10xHis-tagged
Mol. Weight	25.7 kDa
Protein Length	Partial

Image



(Tris-Glycine gel) Discontinuous SDS-PAGE (reduced) with 5% enrichment gel and 15% separation gel.



Activity
 Measured by its binding ability in a functional ELISA. Immobilized *Macaca fascicularis* CRLF2 at 2 µg/ml can bind Anti-CRLF2 recombinant antibody (CSB-RA005983MA1HU). The EC₅₀ is 2.079-2.450 ng/mL.

Endotoxin

Less than 1.0 EU/ug as determined by LAL method.

Reconstitution

We recommend that this vial be briefly centrifuged prior to opening to bring the contents to the bottom. Please reconstitute protein in deionized sterile water to a concentration of 0.1-1.0 mg/mL. We recommend to add 5-50% of glycerol (final concentration) and aliquot for long-term storage at -20°C/-80°C. Our default final concentration of glycerol is 50%. Customers could use it as reference.

Shelf Life

The shelf life is related to many factors, storage state, buffer ingredients, storage temperature and the stability of the protein itself. Generally, the shelf life of liquid form is 6 months at -20°C/-80°C. The shelf life of lyophilized form is 12 months at -20°C/-80°C.