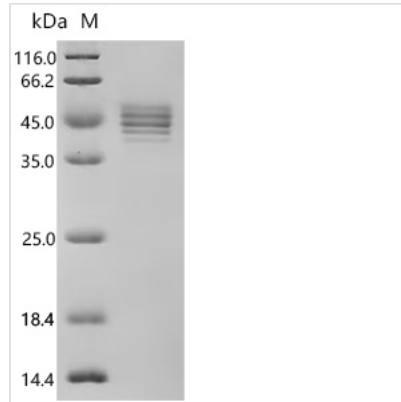


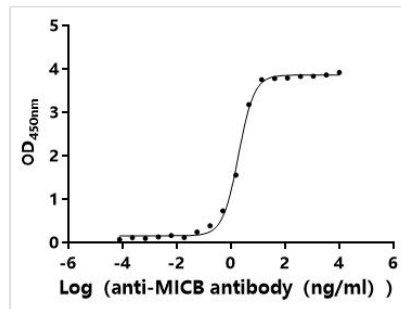


# Recombinant *Macaca fascicularis* MHC class I polypeptide-related sequence B (MICB), partial (Active)

<b>Product Code</b>	CSB-YP6584MOV
<b>Abbreviation</b>	Recombinant <i>Cynomolgus</i> monkey MICB protein, partial (Active)
<b>Storage</b>	The shelf life is related to many factors, storage state, buffer ingredients, storage temperature and the stability of the protein itself. Generally, the shelf life of liquid form is 6 months at -20°C/-80°C. The shelf life of lyophilized form is 12 months at -20°C/-80°C.
<b>Uniprot No.</b>	UJY53393.1
<b>Form</b>	Lyophilized powder
<b>Storage Buffer</b>	Lyophilized from a 0.2 µm sterile filtered PBS, 6% Trehalose, pH 7.4
<b>Product Type</b>	Recombinant Protein
<b>Immunogen Species</b>	<i>Macaca fascicularis</i> (Crab-eating macaque) ( <i>Cynomolgus</i> monkey)
<b>Biological Activity</b>	Measured by its binding ability in a functional ELISA. Immobilized <i>Macaca fascicularis</i> at 2 µg/mL can bind Anti-MICA/B recombinant antibody (CSB-RA56059MA1HU). The EC <sub>50</sub> is 1.749-2.065 ng/mL.
<b>Purity</b>	≥ 95% as determined by SDS-PAGE.
<b>Sequence</b>	ELHSLRYNVTVLSRDGSVQSGFLAEGHLDGQLFVRYDRETRRARPQQGWAE AVLGDQETEDLTENAQDLRRTLTHIEGQKGGHSLQKIKICEIYEDGSTGGFWH FYYDGELFSLNLETQKWTVAQSSRAQTLAMSFWKEDTMKTNTHYRAMRAD CLKKLRRYQKSRVAVRRTVPPMVNVTHGEASEGNITVTCRASGFYPGNITLTW RQDGVSLSHDAQQWGDVLPDRNGTYTWTWATRIRQGEEQKFACYMEHSGN HSTHPVPS
<b>Source</b>	Yeast
<b>Target Names</b>	MICB
<b>Expression Region</b>	31-297aa
<b>Notes</b>	Repeated freezing and thawing is not recommended. Store working aliquots at 4°C for up to one week.
<b>Tag Info</b>	C-terminal 10xHis-tagged
<b>Mol. Weight</b>	32.6 kDa
<b>Protein Length</b>	Partial
<b>Image</b>	



(Tris-Glycine gel) Discontinuous SDS-PAGE (reduced) with 5% enrichment gel and 15% separation gel.



**Activity**  
 Measured by its binding ability in a functional ELISA. Immobilized *Macaca fascicularis* at 2  $\mu$ g/ml can bind Anti-MICA/B recombinant antibody (CSB-RA56059MA1HU). The EC<sub>50</sub> is 1.749-2.065 ng/mL.

### Endotoxin

Less than 1.0 EU/ug as determined by LAL method.

### Reconstitution

We recommend that this vial be briefly centrifuged prior to opening to bring the contents to the bottom. Please reconstitute protein in deionized sterile water to a concentration of 0.1-1.0 mg/mL. We recommend to add 5-50% of glycerol (final concentration) and aliquot for long-term storage at -20°C/-80°C. Our default final concentration of glycerol is 50%. Customers could use it as reference.

### Shelf Life

The shelf life is related to many factors, storage state, buffer ingredients, storage temperature and the stability of the protein itself. Generally, the shelf life of liquid form is 6 months at -20°C/-80°C. The shelf life of lyophilized form is 12 months at -20°C/-80°C.