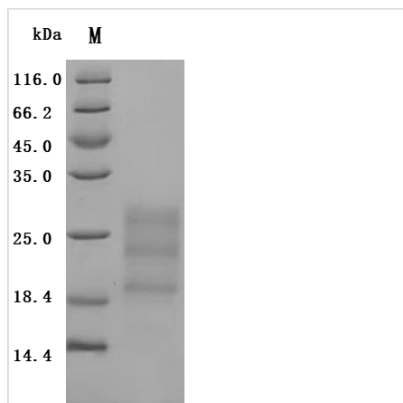


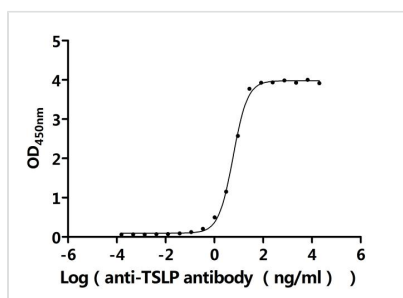


Recombinant Human Thymic stromal lymphopoietin (TSLP) (Active)

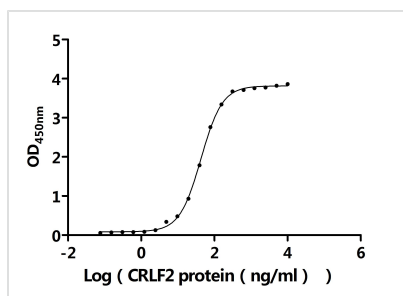
Product Code	CSB-MP025141HUh7
Abbreviation	Recombinant Human TSLP protein (Active)
Storage	The shelf life is related to many factors, storage state, buffer ingredients, storage temperature and the stability of the protein itself. Generally, the shelf life of liquid form is 6 months at -20°C/-80°C. The shelf life of lyophilized form is 12 months at -20°C/-80°C.
Uniprot No.	Q969D9
Form	Lyophilized powder
Storage Buffer	Lyophilized from a 0.2 µm filtered PBS, 6% Trehalose, pH 7.4
Product Type	Recombinant Protein
Immunogen Species	Homo sapiens (Human)
Biological Activity	①Measured by its binding ability in a functional ELISA. Immobilized Human TSLP at 2 µg/mL can bind Anti-TSLP recombinant antibody(CSB-RA025141MA2HU). The EC50 is 5.487-6.214 ng/mL. ②Measured by its binding ability in a functional ELISA. Immobilized Human TSLP at 2 µg/mL can bind Human CRLF2 protein(CSB-MP005983HUd9).The EC50 is 41.01-45.10 ng/mL.
Purity	Greater than 95% as determined by SDS-PAGE.
Sequence	YDFTNCDFEKIKAAAYLSTISKDLITYMSGTKSTEFNNTVSCSNRPHCLTEIQSLT FNPTAGCASLAKEMFAMKTKAALAIWCPGYSETQINATQAMKKRRKRKVTNNK CLEQVSQLQGLWRRFNRPLLKQQ
Source	Mammalian cell
Target Names	TSLP
Expression Region	29-159aa
Notes	Repeated freezing and thawing is not recommended. Store working aliquots at 4°C for up to one week.
Tag Info	N-terminal 6xHis-Myc-tagged
Mol. Weight	19.1 kDa
Protein Length	Full Length of Mature Protein
Image	



(Tris-Glycine gel) Discontinuous SDS-PAGE (reduced) with 5% enrichment gel and 15% separation gel.



Activity
 Measured by its binding ability in a functional ELISA. Immobilized Human TSLP at 2 µg/ml can bind Anti-TSLP recombinant antibody (CSB-RA025141MA2HU). The EC₅₀ is 5.487-6.214 ng/mL.



Activity
 Measured by its binding ability in a functional ELISA. Immobilized Human TSLP at 2 µg/ml can bind Human CRLF2 protein (CSB-MP005983HUd9). The EC₅₀ is 41.01-45.10 ng/mL.

Endotoxin

Less than 1.0 EU/ug as determined by LAL method.

Reconstitution

We recommend that this vial be briefly centrifuged prior to opening to bring the contents to the bottom. Please reconstitute protein in deionized sterile water to a concentration of 0.1-1.0 mg/mL. We recommend to add 5-50% of glycerol (final concentration) and aliquot for long-term storage at -20°C/-80°C. Our default final concentration of glycerol is 50%. Customers could use it as reference.

Shelf Life

The shelf life is related to many factors, storage state, buffer ingredients, storage temperature and the stability of the protein itself. Generally, the shelf life of liquid form is 6 months at -20°C/-80°C. The shelf life of lyophilized form is 12 months at -20°C/-80°C.