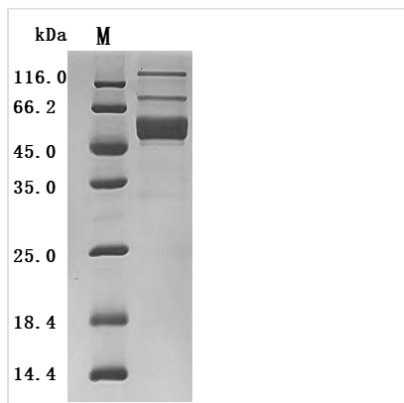




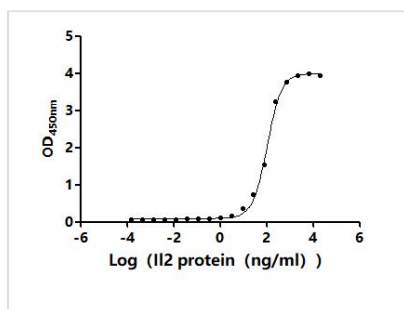
# Recombinant Mouse Interleukin-2 (IL2) (Active)

<b>Product Code</b>	CSB-MP011629MOd9
<b>Abbreviation</b>	Recombinant Mouse IL2 protein (Active)
<b>Storage</b>	The shelf life is related to many factors, storage state, buffer ingredients, storage temperature and the stability of the protein itself. Generally, the shelf life of liquid form is 6 months at -20°C/-80°C. The shelf life of lyophilized form is 12 months at -20°C/-80°C.
<b>Uniprot No.</b>	P04351
<b>Form</b>	Lyophilized powder
<b>Storage Buffer</b>	Lyophilized from a 0.2 μm filtered PBS, 6% Trehalose, pH 7.4
<b>Product Type</b>	Recombinant Protein
<b>Immunogen Species</b>	Mus musculus (Mouse)
<b>Biological Activity</b>	Measured by its binding ability in a functional ELISA. Immobilized Mouse IL2ra (CSB-MP011649MO1) at 2 μg/mL can bind Mouse IL2. The EC50 is 95.00-116.2 ng/mL.
<b>Purity</b>	Greater than 95% as determined by SDS-PAGE.
<b>Sequence</b>	APTSSSTSSSTAEAAQQQQQQQQQQQHLEQLLMDLQELLSRMENYRNLKLP RMLTFKFYLPKQATELKDLCLEDELGPLRHVLDLTQSKSFQLEDAENFISNIR VTVVKLKGSNDTFECQFDDESATVVDFLRRWIAFCQSIISTSPQ
<b>Source</b>	Mammalian cell
<b>Target Names</b>	IL2
<b>Expression Region</b>	21-169aa
<b>Notes</b>	Repeated freezing and thawing is not recommended. Store working aliquots at 4°C for up to one week.
<b>Tag Info</b>	C-terminal hFc1-tagged
<b>Mol. Weight</b>	46.2 kDa
<b>Protein Length</b>	Full Length of Mature Protein

## Image



(Tris-Glycine gel) Discontinuous SDS-PAGE (reduced) with 5% enrichment gel and 15% separation gel.


**Activity**

Measured by its binding ability in a functional ELISA. Immobilized Mouse IL2ra (CSB-MP011649MO1) at 2  $\mu$ g/ml can bind Mouse IL2. The  $EC_{50}$  is 95.00-116.2 ng/mL.

**Endotoxin**

Less than 1.0 EU/ $\mu$ g as determined by LAL method.

**Reconstitution**

We recommend that this vial be briefly centrifuged prior to opening to bring the contents to the bottom. Please reconstitute protein in deionized sterile water to a concentration of 0.1-1.0 mg/mL. We recommend to add 5-50% of glycerol (final concentration) and aliquot for long-term storage at -20°C/-80°C. Our default final concentration of glycerol is 50%. Customers could use it as reference.

**Shelf Life**

The shelf life is related to many factors, storage state, buffer ingredients, storage temperature and the stability of the protein itself.

Generally, the shelf life of liquid form is 6 months at -20°C/-80°C. The shelf life of lyophilized form is 12 months at -20°C/-80°C.