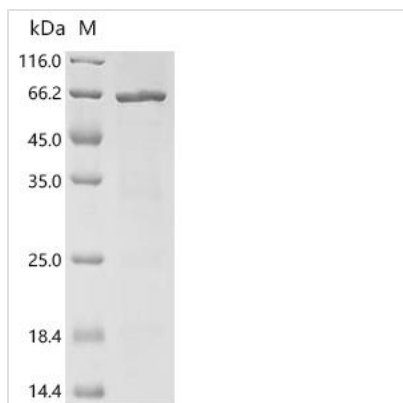




Recombinant Bartonella henselae Probable periplasmic serine endoprotease DegP-like (htrA)

Product Code	CSB-EP345817BSG
Abbreviation	Recombinant Bartonella henselae htrA protein
Storage	The shelf life is related to many factors, storage state, buffer ingredients, storage temperature and the stability of the protein itself. Generally, the shelf life of liquid form is 6 months at -20°C/-80°C. The shelf life of lyophilized form is 12 months at -20°C/-80°C.
Uniprot No.	P54925
Form	Liquid or Lyophilized powder
Storage Buffer	If the delivery form is liquid, the default storage buffer is Tris/PBS-based buffer, 5%-50% glycerol. If the delivery form is lyophilized powder, the buffer before lyophilization is Tris/PBS-based buffer, 6% Trehalose, pH 8.0.
Product Type	Recombinant Bartonella henselae Probable periplasmic serine endoprotease DegP-like (htrA)
Immunogen Species	Bartonella henselae (strain ATCC 49882 / DSM 28221 / CCUG 30454 / Houston 1) (Rochalimaea henselae)
Sensitivity	Not Test
Purity	≥ 85% as determined by SDS-PAGE.
Sequence	LETALFFSGCGSSLWTTKAHANSVFSSLMQQQGFADIVSQVKPAVVSQVQKS NKKKKEWFFSDFSTPGFDQLPDQHPLKFFQDFYNRDKPSNKSLSRSHRLR PIAFGSGFFISSDGYIVTNNHVISDGTSYAVVLDDGTELNALIGTDPRTDLAVL KVNEKRKFSYVDFGDDSKLRVGDWVVAIGNPFGLGGTVTAGIVSARGRDIGT GVYDDFIQIDA AVNRGNSSGGPTFDLNGKVVG VNTAIFSPSGGNV GIAFAIPAAT AKQVVQQLIEKGLVQRGWLG VQIQPVTK EISDSIGLKEAKGALITDPLKGPAAK AGIKAGDVIISVNGEKINDVRDLAKRIANMSPGETVTLGVWVWKSKEENIKVKLDS MPEDENMKDGSKYSNEHGNSDETLEDYGLIVAPSDDG VGLVVTVDVDPDSDAA DKGIRPGDVIVTVNNKSVKKVSDITDTIKNAQKLGRKAILLQVRTNDQNR FVALP IFKK
Research Area	Others
Source	E.coli
Target Names	htrA
Expression Region	19-503aa
Notes	Repeated freezing and thawing is not recommended. Store working aliquots at 4°C for up to one week.
Tag Info	N-terminal 10xHis-tagged and C-terminal Myc-tagged
Mol. Weight	59.6 kDa

**Protein Length****Full Length of Mature Protein****Image**

(Tris-Glycine gel) Discontinuous SDS-PAGE (reduced) with 5% enrichment gel and 15% separation gel.

Reconstitution

We recommend that this vial be briefly centrifuged prior to opening to bring the contents to the bottom. Please reconstitute protein in deionized sterile water to a concentration of 0.1-1.0 mg/mL. We recommend to add 5-50% of glycerol (final concentration) and aliquot for long-term storage at -20°C/-80°C. Our default final concentration of glycerol is 50%. Customers could use it as reference.

Shelf Life

The shelf life is related to many factors, storage state, buffer ingredients, storage temperature and the stability of the protein itself. Generally, the shelf life of liquid form is 6 months at -20°C/-80°C. The shelf life of lyophilized form is 12 months at -20°C/-80°C.