



Recombinant Dog Werner syndrome ATP-dependent helicase isoform X2, partial

Product Code	CSB-BP5942DO
Abbreviation	Recombinant Dog Werner syndrome ATP-dependent helicase isoform X2 protein, partial
Storage	The shelf life is related to many factors, storage state, buffer ingredients, storage temperature and the stability of the protein itself. Generally, the shelf life of liquid form is 6 months at -20°C/-80°C. The shelf life of lyophilized form is 12 months at -20°C/-80°C.
Uniprot No.	XP_038480129.1
Form	Liquid or Lyophilized powder
Storage Buffer	If the delivery form is liquid, the default storage buffer is Tris/PBS-based buffer, 5%-50% glycerol. If the delivery form is lyophilized powder, the buffer before lyophilization is Tris/PBS-based buffer, 6% Trehalose, pH 8.0.
Product Type	Recombinant Dog Werner syndrome ATP-dependent helicase isoform X2, partial
Immunogen Species	Canis lupus familiaris (Dog) (Canis familiaris)
Sensitivity	Not Test
Purity	≥ 85% as determined by SDS-PAGE.
Sequence	IEEEDDNVEDYSLPRPNARQINFLKIYFGHSSFKPVQWKVIHSVLEERRDNVVV MATGYGKSLCFQYPPVYSGRIGLVISPLISLMEDQVLQLKMSNIPACFLGSAQS KNVLEDIKLGKYRIVYITPEFCSGNLFLLQQLQADIGITLIADVDEAHCISEWGHDF RSSFRTLGLSKAILPSVPIVALTATASSSIREDIVRCLNLKNPQITCTGFDRPNLY LEVRRKTGSILQDLQFLVQKTSSIWFEFEGPTIYCPSRKTTEQVTAELRKLKLA CGAYHAGLDIKSRREIHHRFMRDEIQCVVATIAFGMGINKADIRKVIHYGAPKE MESYYQEIGRAGRDGLQSSCHVLWAPADICLNRHRLSEITSEKFRLYKMKMA KMEKYLHSTRCRRQLILSHFEDKQLRKASVGIMGTEQCCDNCRSRLDQCSSID DSDDASQDFGPQTFQLLSAVKILGEKFGIGLPILFLQGSNSQRLEDKYRRHSFLF GTGKDQKESWWKALSRQLMAEGFLVEVPGRQKFIRICTLTEKGRCWLHEANR EFPKCLKLEANEELCPRVFLPSSKTVPPGAEQHSSNRVPIELTAEKKSNEKMK YSYKASDKISSGSNIPEKSIIVHSPGKSYKSSEPVISAEQETQTVLYGILVEARQ KHAGKMDVPPAILATNKILLEMAKMRPTTFENMKRINGVSEGGKATMLTPLLEVI KHFCQINNVQSDLFSSTKPWEEP
Research Area	Others
Source	Baculovirus
Target Names	N/A
Expression Region	488-1215aa
Notes	Repeated freezing and thawing is not recommended. Store working aliquots at 4°C for up to one week.

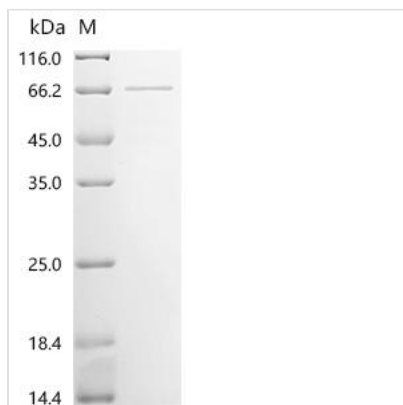


Tag Info N-terminal 6xHis-ZZ-tagged

Mol. Weight 99.3 kDa

Protein Length Partial

Image



(Tris-Glycine gel) Discontinuous SDS-PAGE (reduced) with 5% enrichment gel and 15% separation gel.

Reconstitution

We recommend that this vial be briefly centrifuged prior to opening to bring the contents to the bottom. Please reconstitute protein in deionized sterile water to a concentration of 0.1-1.0 mg/mL. We recommend to add 5-50% of glycerol (final concentration) and aliquot for long-term storage at -20°C/-80°C. Our default final concentration of glycerol is 50%. Customers could use it as reference.

Shelf Life

The shelf life is related to many factors, storage state, buffer ingredients, storage temperature and the stability of the protein itself. Generally, the shelf life of liquid form is 6 months at -20°C/-80°C. The shelf life of lyophilized form is 12 months at -20°C/-80°C.