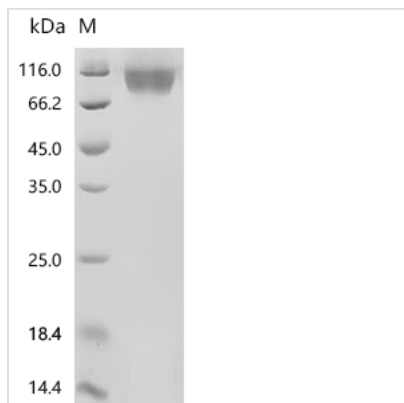


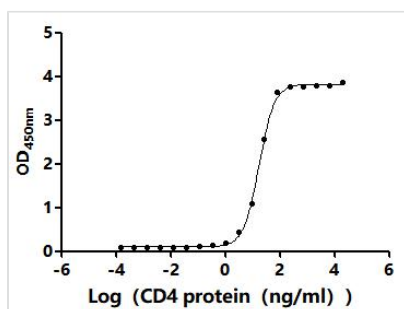


Recombinant Human immunodeficiency virus 1 Envelope glycoprotein gp160 (env), partial (Active)

Product Code	CSB-MP6761GJP
Abbreviation	Recombinant Human immunodeficiency virus 1 env protein, partial (Active)
Storage	The shelf life is related to many factors, storage state, buffer ingredients, storage temperature and the stability of the protein itself. Generally, the shelf life of liquid form is 6 months at -20°C/-80°C. The shelf life of lyophilized form is 12 months at -20°C/-80°C.
Uniprot No.	ABL67444.1
Form	Lyophilized powder
Storage Buffer	Lyophilized from a 0.2 µm sterile filtered PBS, 6% Trehalose, pH 7.4
Product Type	Recombinant Protein
Biological Activity	Measured by its binding ability in a functional ELISA. Immobilized HIV-1 env at 2 µg/mL can bind Human CD4(CSB-MP004935HU1). The EC50 is 12.28-19.67 ng/mL.
Purity	Greater than 95% as determined by SDS-PAGE.
Sequence	YYGVPVWKEAKTTLFCASDAKAYEKEVHNVWATHACVPTDPNPQEMVLENT ENFNMWKNMVEQMHEDVISLWDQSLKPCVKLTPLCVTLECRQVNTTATSS VNVTNGEEIKNCSFNATTEIRDKKQKVYALFYRLDIVPLEEERKGNSSKYRLINC NTSAITQACPKVTFDPIPIHYCAPAGYAILKCNKTFNGTGPCNNVSTVQCTHGI KPVVSTQLLLNGSLAEGEIIIRSENLTNNVKTIVHLNESVEIVCTRPNNNTRKSIR IGPGQTFYATGDIIGNIRQAYCNIKKDDWIRTLQRVGGKLAEHFPRRIINFTSPA GGDLEITTHSFNCRGEFFYCNTSSLFNSTYNPNDTNSNSSSSSSSLDITIPCRIK QIINMWQEVGRAMYAPPIEGNITCKSNITGLLLVRDGGVESNETEIFRPGGGDM RNNWRSELYKYKVVEIKPLGIAPTAARKRRVVEREKRA
Source	Mammalian cell
Target Names	env
Expression Region	36-507aa
Notes	Repeated freezing and thawing is not recommended. Store working aliquots at 4°C for up to one week.
Tag Info	C-terminal Twin-Strep-tagged
Mol. Weight	56.1 kDa
Protein Length	Partial
Image	



(Tris-Glycine gel) Discontinuous SDS-PAGE (reduced) with 5% enrichment gel and 15% separation gel.



Activity
Measured by its binding ability in a functional ELISA. Immobilized HIV-1 env at 2 μ g/ml can bind Human CD4(CSB-MP004935HU1). The EC_{50} is 12.28-19.67 ng/mL.

Endotoxin

Less than 1.0 EU/ug as determined by LAL method.

Reconstitution

We recommend that this vial be briefly centrifuged prior to opening to bring the contents to the bottom. Please reconstitute protein in deionized sterile water to a concentration of 0.1-1.0 mg/mL. We recommend to add 5-50% of glycerol (final concentration) and aliquot for long-term storage at -20°C/-80°C. Our default final concentration of glycerol is 50%. Customers could use it as reference.

Shelf Life

The shelf life is related to many factors, storage state, buffer ingredients, storage temperature and the stability of the protein itself. Generally, the shelf life of liquid form is 6 months at -20°C/-80°C. The shelf life of lyophilized form is 12 months at -20°C/-80°C.