

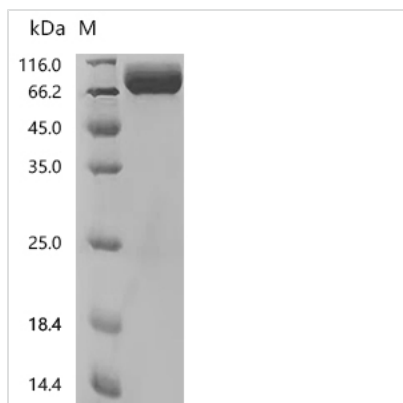


Recombinant Human Macrophage colony-stimulating factor 1 receptor (CSF1R), partial (Active)

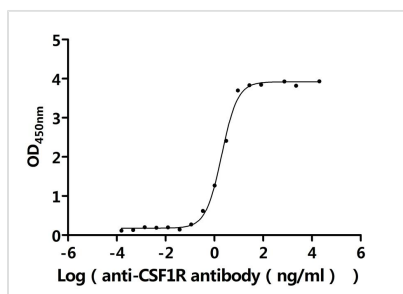
Product Code	CSB-MP006044HUd7
Abbreviation	Recombinant Human CSF1R protein, partial (Active)
Storage	The shelf life is related to many factors, storage state, buffer ingredients, storage temperature and the stability of the protein itself. Generally, the shelf life of liquid form is 6 months at -20°C/-80°C. The shelf life of lyophilized form is 12 months at -20°C/-80°C.
Uniprot No.	P07333
Form	Lyophilized powder
Storage Buffer	Lyophilized from a 0.2 µm sterile filtered PBS, 6% Trehalose, pH 7.4
Product Type	Recombinant Protein
Immunogen Species	Homo sapiens (Human)
Biological Activity	①Measured by its binding ability in a functional ELISA. Immobilized Human CSF1R at 2 µg/mL can bind Anti-CSF1R recombinant antibody (CSB-RA006044MA1HU). The EC50 is 1.800-2.218 ng/mL. ②Measured by its binding ability in a functional ELISA. Immobilized Human CSF1R at 2 µg/mL can bind Human CSF1 (CSB-MP006043HU1). The EC50 is 22.53-25.44 ng/mL.
Purity	Greater than 95% as determined by SDS-PAGE.
Sequence	IPVIEPSVPELVVKPGATVTLRCVGNNGSVEWDGPPSPHWTLYSDGSSSILSTN NATFQNTGTYRCTEPGDPLGGSAIHLVVKDPPARPNVLAQEVVVFEDQDAL LPCLLTDPVLEAGVSLVRVRGRPLMRHTNYSFSPWHGFTIHRAKFIQSQDYQC SALMGGRKVMSSIRLKVQKVIPGPPALTLVPAELVRIRGEAAQIVCSASSVDVN FDVFLQHNNTKLAIPQQSDFHNNRYQKVLTNLNDQVDFQHAGNYSCVASNVQ GKHSTSMFFRVVESAYLNLSSQNLIQEVTVGEGLNLKVMVEAYPGLQGFNW TYLGPFSDHQPEPKLANATTKD TYRHTFTLSLPR LK PSEAGRYSFLARNPGGW RALTFELTLRYPPEVSVIWTFINGSGTLLCAASGYQPNTWLQCSGHTDRCD EAQVLQVWDDPYPEVLSQEPFHKVTVQSLT VETLEHNQTYECRAHNSVSGS SWAFIPISAGAHTHPPDE
Source	Mammalian cell
Target Names	CSF1R
Expression Region	20-512aa
Notes	Repeated freezing and thawing is not recommended. Store working aliquots at 4°C for up to one week.
Tag Info	C-terminal 10xHis-tagged
Mol. Weight	55.9 kDa


Protein Length

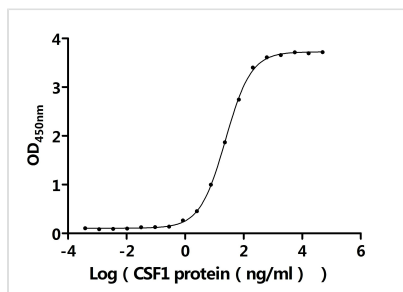
Partial

Image


(Tris-Glycine gel) Discontinuous SDS-PAGE (reduced) with 5% enrichment gel and 15% separation gel.


Activity

① Measured by its binding ability in a functional ELISA. Immobilized Human CSF1R at 2 μg/ml can bind Anti-CSF1R recombinant antibody (CSB-RA006044MA1HU). The EC₅₀ is 1.800-2.218 ng/mL.


Activity

② Measured by its binding ability in a functional ELISA. Immobilized Human CSF1R at 2 μg/ml can bind Human CSF1 (CSB-MP006043HU1). The EC₅₀ is 22.53-25.44 ng/mL.

Endotoxin

Less than 1.0 EU/ug as determined by LAL method.

Reconstitution

We recommend that this vial be briefly centrifuged prior to opening to bring the contents to the bottom. Please reconstitute protein in deionized sterile water to a concentration of 0.1-1.0 mg/mL. We recommend to add 5-50% of glycerol (final concentration) and aliquot for long-term storage at -20°C/-80°C. Our default final concentration of glycerol is 50%. Customers could use it as reference.

Shelf Life

The shelf life is related to many factors, storage state, buffer ingredients, storage temperature and the stability of the protein itself. Generally, the shelf life of liquid form is 6 months at -20°C/-80°C. The shelf life of lyophilized form is 12 months at -20°C/-80°C.