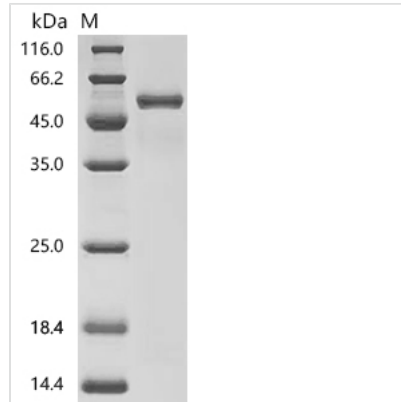


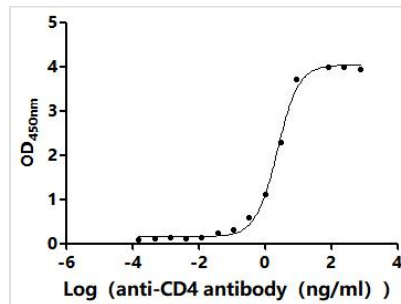


Recombinant Macaca mulatta T-cell surface glycoprotein CD4 (CD4), partial (Active)

Product Code	CSB-MP6740MOW
Abbreviation	Recombinant Rhesus macaque CD4 protein, partial (Active)
Storage	The shelf life is related to many factors, storage state, buffer ingredients, storage temperature and the stability of the protein itself. Generally, the shelf life of liquid form is 6 months at -20°C/-80°C. The shelf life of lyophilized form is 12 months at -20°C/-80°C.
Uniprot No.	G7N5T8
Form	Lyophilized powder
Storage Buffer	Lyophilized from a 0.2 μm sterile filtered PBS, 6% Trehalose, pH 7.4
Product Type	Recombinant Protein
Immunogen Species	Macaca mulatta (Rhesus macaque)
Biological Activity	Measured by its binding ability in a functional ELISA. Immobilized Macaca mulatta CD4 at 2 μg/mL can bind Anti-CD4 recombinant antibody (CSB-RA004935MA3HU). The EC50 is 2.057-2.679 ng/mL.
Purity	Greater than 95% as determined by SDS-PAGE.
Sequence	KKVVLGKKGDTVELTCNASQKKNTQFHWKNSNQIKILGIQGSFLTkgpsklSD RADSRKSLWDQGCFSMIKNLKIEDSDTYICEVENKKEEVLLVFGLTANSDTH LLEGQSLTLTLESPPGSSPSVKCRSPGGKNIQGGRTISVPQLERQDSGTWTCT VSQDQKTVEFKIDIVVLAQKASSTVYKKEGEQVEFSFPLAFTLEKLTGSGELW WQAERASSSKSWITFDLKNKEVSVKRVTDPKLQMGKKLPLHLTLPQALPQY AGSGNLTALAEAKTGKLNHVEVNLVVMRATQFQENLTCEVWGPTSPKLTLSLKL ENKGATVSKQAKAVVVLNPEAGMWQCLLSDSGQVLLSNIKVVPTWPTPVQ P
Source	Mammalian cell
Target Names	CD4
Expression Region	26-396aa
Notes	Repeated freezing and thawing is not recommended. Store working aliquots at 4°C for up to one week.
Tag Info	C-terminal 10xHis-tagged
Mol. Weight	42.4 kDa
Protein Length	Partial
Image	



(Tris-Glycine gel) Discontinuous SDS-PAGE (reduced) with 5% enrichment gel and 15% separation gel.



Activity
 Measured by its binding ability in a functional ELISA. Immobilized *Macaca mulatta* CD4 at 2 $\mu\text{g/ml}$ can bind Anti-CD4 recombinant antibody (CSB-RA004935MA3HU). The EC_{50} is 2.057-2.679 ng/mL.

Endotoxin

Less than 1.0 EU/ μg as determined by LAL method.

Reconstitution

We recommend that this vial be briefly centrifuged prior to opening to bring the contents to the bottom. Please reconstitute protein in deionized sterile water to a concentration of 0.1-1.0 mg/mL. We recommend to add 5-50% of glycerol (final concentration) and aliquot for long-term storage at $-20^{\circ}\text{C}/-80^{\circ}\text{C}$. Our default final concentration of glycerol is 50%. Customers could use it as reference.

Shelf Life

The shelf life is related to many factors, storage state, buffer ingredients, storage temperature and the stability of the protein itself. Generally, the shelf life of liquid form is 6 months at $-20^{\circ}\text{C}/-80^{\circ}\text{C}$. The shelf life of lyophilized form is 12 months at $-20^{\circ}\text{C}/-80^{\circ}\text{C}$.