

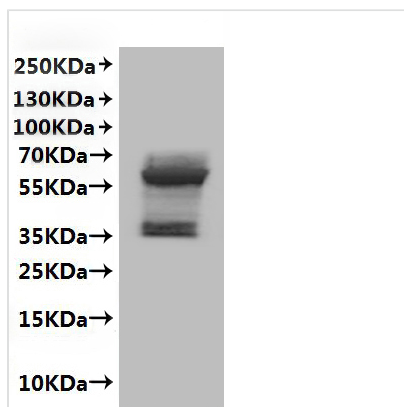


Recombinant Human C-C chemokine receptor type 1 (CCR1)-VLPs (Active)

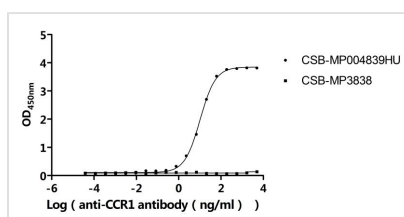
Product Code	CSB-MP004839HU
Abbreviation	Recombinant Human CCR1 protein-VLPs (Active)
Storage	The shelf life is related to many factors, storage state, buffer ingredients, storage temperature and the stability of the protein itself. Generally, the shelf life of liquid form is 6 months at -20°C/-80°C. The shelf life of lyophilized form is 12 months at -20°C/-80°C.
Uniprot No.	P32246
Form	Lyophilized powder
Storage Buffer	Lyophilized from a 0.2 μm sterile filtered PBS, 6% Trehalose, pH 7.4
Product Type	Recombinant Protein
Immunogen Species	Homo sapiens (Human)
Biological Activity	Measured by its binding ability in a functional ELISA. Immobilized Human CCR1 at 10 μg/mL can bind Anti-CCR1 recombinant antibody(CSB-RA004839MA1HU). The EC50 is 9.690-10.94 ng/mL.The VLPs (CSB-MP3838) is negative control.
Purity	Greater than 90% as determined by SEC-HPLC.
Sequence	METPNTTEDYDTTTEFDYGDATPCQKVNERAFGAQLLPPLYSLVVFVIGLVGNIL VVLVLVQYKRLKNMNTSIYLLNLAISDLLFLFTLPFWIDYKLLKDDWVFGDAMCKIL SGFYTTGLYSEIFFIILLTIDRYLAIVHAVFALRARTVTFGVITSIIIWALAILASMPG LYFSKTQWEFTHTCSLHFPHESLREWKLFFQALKLNLFGLVPLLVMIICYTGII KILLRRPNEKKS KAVRLIFVIMIIFFLFWTPYNLTILISVVFQDFLFTHECEQSRHLD LAVQVTEVIAYTHCCVNPVIYAFVGERFRKYLRQLFHRRVAVHLVKWLPFLSVD RLERSSTSPSTGEHEL SAGF
Source	Mammalian cell
Target Names	CCR1
Expression Region	1-355aa
Notes	The VLPs are expressed from human 293 cells (HEK293). Mix the sample gently by repeatedly pipetting it up and down. Do not vortex. Repeated freezing and thawing is not recommended. Store the protein at -20°C/-80°C upon receiving it, and ensure to avoid repeated freezing and thawing, otherwise, it will affect the protein activity. The immunization strategy should be optimized (antigen dose, regimen and adjuvant).
Tag Info	C-terminal 10xHis-tagged
Mol. Weight	42.5 kDa
Protein Length	Full Length



Image

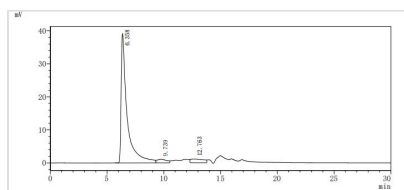


CSB-MP004839HU is detected by Mouse anti-6*His monoclonal antibody.



Activity

Measured by its binding ability in a functional ELISA. Immobilized Human CCR1 at 10 µg/ml can bind Anti-CCR1 recombinant antibody(CSB-RA004839MA1HU). The EC₅₀ is 9.690-10.94 ng/mL.The VLPs (CSB-MP3838) is negative control.



The purity of VLPs was greater than 90% as determined by SEC-HPLC

Endotoxin

Less than 1.0 EU/ug as determined by LAL method.

Reconstitution

We recommend that this vial be briefly centrifuged prior to opening to bring the contents to the bottom. Please reconstitute protein in deionized sterile water to a concentration of 0.1-1.0 mg/mL.We recommend to add 5-50% of glycerol (final concentration) and aliquot for long-term storage at -20°C/-80°C. Our default final concentration of glycerol is 50%. Customers could use it as reference.

Shelf Life

The shelf life is related to many factors, storage state, buffer ingredients, storage temperature and the stability of the protein itself. Generally, the shelf life of liquid form is 6 months at -20°C/-80°C. The shelf life of lyophilized form is 12 months at -20°C/-80°C.