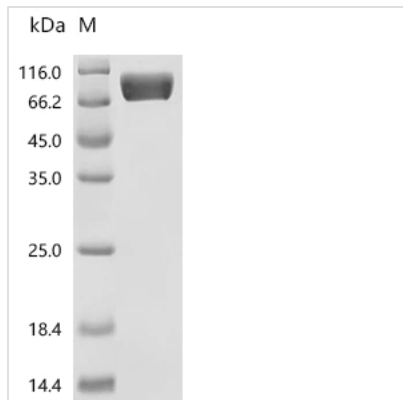
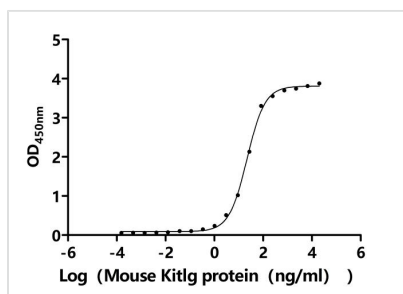



Protein Length

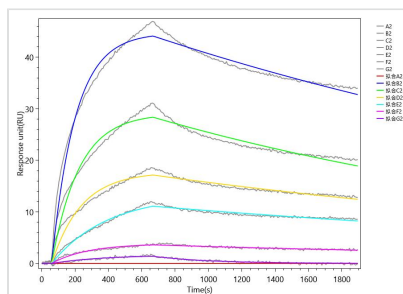
Partial of Isoform 2

Image


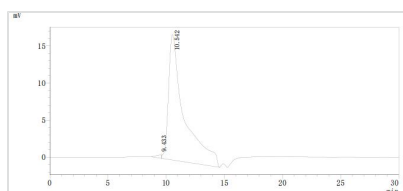
(Tris-Glycine gel) Discontinuous SDS-PAGE (reduced) with 5% enrichment gel and 15% separation gel.


Activity

Measured by its binding ability in a functional ELISA. Immobilized Mouse Kit at 2 μg/ml can bind Mouse Kitlg (CSB-MP012376MO1d9). The EC₅₀ is 19.35-24.80 ng/mL.


Activity

Mouse Kitlg (CSB-MP012376MO1d9) captured on Protein A Chip can bind Recombinant Mouse Kit with an affinity constant of 15.1 nM as detected by MetaSPR Assay (WeSPRTM 200).



The purity of Kit was greater than 95% as determined by SEC-HPLC

Endotoxin

Less than 1.0 EU/ug as determined by LAL method.

Reconstitution

We recommend that this vial be briefly centrifuged prior to opening to bring the contents to the bottom. Please reconstitute protein in deionized sterile water to a concentration of 0.1-1.0 mg/mL. We recommend to add 5-50% of glycerol (final concentration) and aliquot for long-term storage at -20°C/-80°C. Our default final concentration of glycerol is 50%. Customers could use it as reference.

Shelf Life

The shelf life is related to many factors, storage state, buffer ingredients, storage temperature and the stability of the protein itself.

Generally, the shelf life of liquid form is 6 months at -20°C/-80°C. The shelf life of lyophilized form is 12 months at -20°C/-80°C.