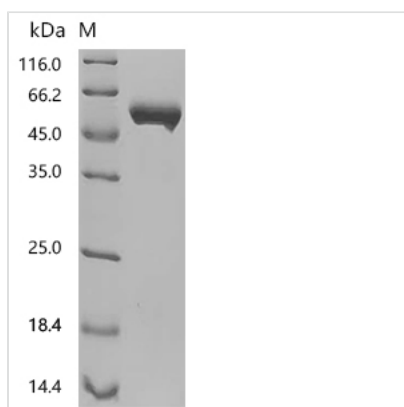


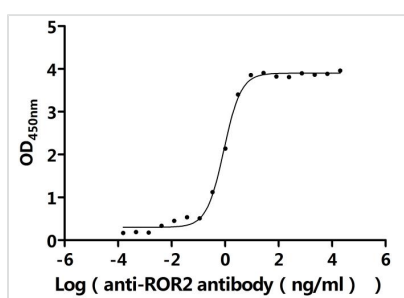


Recombinant Human Tyrosine-protein kinase transmembrane receptor ROR2 (ROR2), partial (Active)

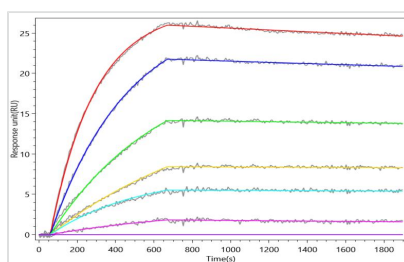
Product Code	CSB-MP932279HU
Abbreviation	Recombinant Human ROR2 protein, partial (Active)
Storage	The shelf life is related to many factors, storage state, buffer ingredients, storage temperature and the stability of the protein itself. Generally, the shelf life of liquid form is 6 months at -20°C/-80°C. The shelf life of lyophilized form is 12 months at -20°C/-80°C.
Uniprot No.	Q01974
Form	Lyophilized powder
Storage Buffer	Lyophilized from a 0.2 µm sterile filtered PBS, 6% Trehalose, pH 7.4
Product Type	Recombinant Protein
Immunogen Species	Homo sapiens (Human)
Biological Activity	①Measured by its binding ability in a functional ELISA.Immobilized Human ROR2 at 2 µg/mL can bind Anti-ROR2 recombinant antibody (CSB-RA932279MA2HU).The EC50 is 0.8067-0.9971 ng/mL. ②ROR2 Recombinant Monoclonal Antibody(CSB-RA932279MA2HU) captured on Protein A Chip can bind Human ROR2 with an affinity constant of 0.17 nM as detected by MetaSPR Assay (WeSPRTM 200).
Purity	Greater than 95% as determined by SDS-PAGE.
Sequence	EVEVLDPN DPLG PLD GQD GPIPTL KGYFLN FLEPVNNITIVQGGQTAILHCKVAG NPPPNVRWLKNDAPVVQEPRIIRKTEYGSRLRIQDLDTTDTGYQC VATNG MKTITATGVLFVRLGPTHSPNHN FQDDYHEDGFCQPYRGIACARFIGNRTIYVD SLQM QGEIENRITAAFTMIGTSTHLS DQCSQFAIPSFCHFVFPLCDARS RTPKP REL CRDECEVLES DL CRQEYTIARSNPLILMRLQLPKCEALPMPESPDAANCM RIGIPAERLGRYHQCYNGSGMDYRGTASTTKSGHQCPWALQHPHSHHLSS TDFPELGGGHAYCRNPGGQMEGPWCFTQNK NVRMELCDVPSCSPRDSSKM G
Source	Mammalian cell
Target Names	ROR2
Expression Region	34-403aa
Notes	Repeated freezing and thawing is not recommended. Store working aliquots at 4°C for up to one week.
Tag Info	C-terminal 10xHis-tagged
Mol. Weight	42.7 kDa
Protein Length	Partial


Image


(Tris-Glycine gel) Discontinuous SDS-PAGE (reduced) with 5% enrichment gel and 15% separation gel.



Activity
 Measured by its binding ability in a functional ELISA. Immobilized Human ROR2 at 2 $\mu\text{g/ml}$ can bind Anti-ROR2 recombinant antibody (CSB-RA932279MA2HU). The EC_{50} is 0.8067-0.9971 ng/mL.



Activity
 ROR2 Recombinant Monoclonal Antibody (CSB-RA932279MA2HU) captured on Protein A Chip can bind Human ROR2 with an affinity constant of 0.17 nM as detected by MetaSPR Assay (WeSPRTM 200).

Endotoxin

Less than 1.0 EU/ μg as determined by LAL method.

Reconstitution

We recommend that this vial be briefly centrifuged prior to opening to bring the contents to the bottom. Please reconstitute protein in deionized sterile water to a concentration of 0.1-1.0 mg/mL. We recommend to add 5-50% of glycerol (final concentration) and aliquot for long-term storage at $-20^{\circ}\text{C}/-80^{\circ}\text{C}$. Our default final concentration of glycerol is 50%. Customers could use it as reference.

Shelf Life

The shelf life is related to many factors, storage state, buffer ingredients, storage temperature and the stability of the protein itself. Generally, the shelf life of liquid form is 6 months at $-20^{\circ}\text{C}/-80^{\circ}\text{C}$. The shelf life of lyophilized form is 12 months at $-20^{\circ}\text{C}/-80^{\circ}\text{C}$.