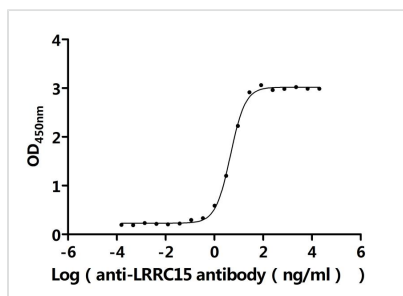




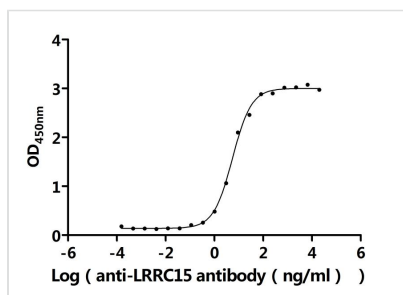
# LRRC15 Recombinant Monoclonal Antibody

<b>Product Code</b>	CSB-RA819484MA1HU
<b>Storage</b>	Upon receipt, store at -20°C or -80°C. Avoid repeated freeze.
<b>Uniprot No.</b>	Q8TF66
<b>Immunogen</b>	Recombinant Human LRRC15 protein
<b>Species Reactivity</b>	Human?Macaca fascicularis?Mouse
<b>Tested Applications</b>	ELISA; Recommended dilution: ELISA:1:5000-1:50000
<b>Form</b>	Liquid
<b>Conjugate</b>	Non-conjugated
<b>Storage Buffer</b>	Preservative: 0.03% Proclin 300 Constituents: 50% Glycerol, 0.01M PBS, PH 7.4
<b>Purification Method</b>	Affinity-chromatography
<b>Isotype</b>	hIgG1
<b>Clonality</b>	Monoclonal
<b>Product Type</b>	Recombinant Antibody
<b>Immunogen Species</b>	Homo sapiens (Human)
<b>Target Names</b>	LRRC15
<b>Clone No.</b>	1D8

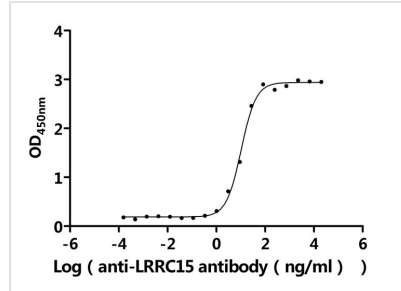
## Image



The Binding Activity of Macaca fascicularis LRRC15 with Anti-LRRC15 recombinant antibody  
Activity: Measured by its binding ability in a functional ELISA. Immobilized Macaca fascicularis LRRC15 (CSB-MP5071MOV) at 2 µg/mL on an Nickel Coated plate can bind Anti-LRRC15 recombinant antibody. The EC<sub>50</sub> is 4.100-5.074 ng/mL.



The Binding Activity of Mouse Lrrc15 with Anti-LRRC15 recombinant antibody  
Activity: Measured by its binding ability in a functional ELISA. Immobilized Mouse Lrrc15 (CSB-MP5071MOV) at 2 µg/mL on an Nickel Coated plate can bind Anti-LRRC15 recombinant antibody. The EC<sub>50</sub> is 4.240-6.272 ng/mL.



The Binding Activity of Human LRRC15 with Anti-LRRC15 recombinant antibody Activity: Measured by its binding ability in a functional ELISA. Immobilized Human LRRC15 (CSB-MP819484HU) at 2  $\mu$ g/mL on an Nickel Coated plate can bind Anti-LRRC15 recombinant antibody. The EC<sub>50</sub> is 12.18-15.75 ng/mL.

## Usage

For Research Use Only. Not for use in diagnostic or therapeutic procedures.