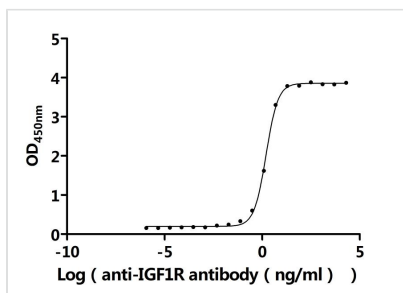




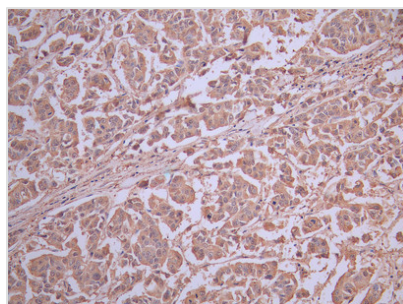
IGF1R Recombinant Monoclonal Antibody

Product Code	CSB-RA011087MA2HU
Storage	Upon receipt, store at -20°C or -80°C. Avoid repeated freeze.
Uniprot No.	P08069
Immunogen	Recombinant Human IGF1R protein
Species Reactivity	Human
Tested Applications	ELISA, IHC, IF, FC; Recommended dilution: ELISA:1:5000-1:50000, IHC:1:50-1:200, IF:1:50-1:200, IHC:1:50-1:200
Form	Liquid
Conjugate	Non-conjugated
Storage Buffer	Preservative: 0.03% Proclin 300 Constituents: 50% Glycerol, 0.01M PBS, PH 7.4
Purification Method	Affinity-chromatography
Isotype	hIgG1
Clonality	Monoclonal
Product Type	Recombinant Antibody
Immunogen Species	Homo sapiens (Human)
Target Names	IGF1R
Clone No.	10C6

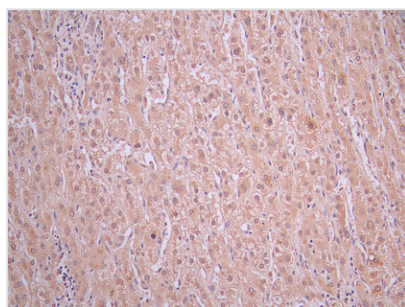
Image



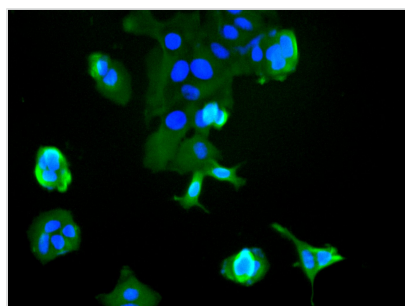
The Binding Activity of Human IGF1R with Anti-IGF1R Recombinant Antibody
Activity: Measured by its binding ability in a functional ELISA. Immobilized Human IGF1R (CSB-MP011087HU1) at 2 µg/mL can bind Anti-IGF1R recombinant antibody. The EC₅₀ is 1.479-1.702 ng/mL.



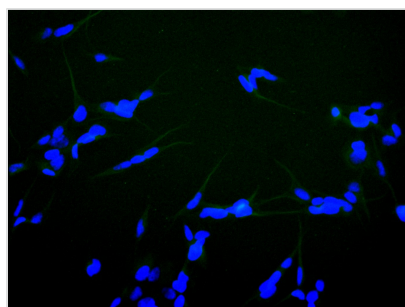
IHC image of CSB-RA011087MA2HU diluted at 1:50 and staining in paraffin-embedded human breast cancer performed on a Leica Bond™ system. After dewaxing and hydration, antigen retrieval was mediated by high pressure in a citrate buffer (pH 6.0). Section was blocked with 10% normal goat serum 30min at RT. Then primary antibody (1% BSA) was incubated at 4°C overnight. The primary is detected by a Anti-Human IgG, Fcy Fragment Specific labeled by HRP and visualized using 0.05% DAB.



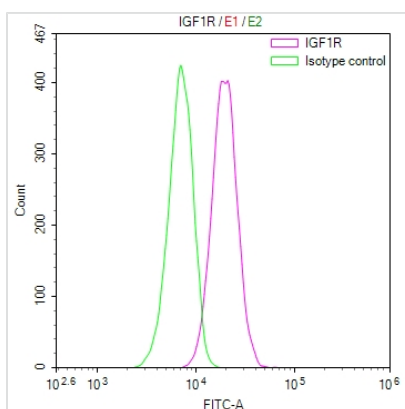
IHC image of CSB-RA011087MA2HU diluted at 1:50 and staining in paraffin-embedded human liver cancer performed on a Leica BondTM system. After dewaxing and hydration, antigen retrieval was mediated by high pressure in a citrate buffer (pH 6.0). Section was blocked with 10% normal goat serum 30min at RT. Then primary antibody (1% BSA) was incubated at 4°C overnight. The primary is detected by a Anti-Human IgG, Fc γ Fragment Specific labeled by HRP and visualized using 0.05% DAB.



Immunofluorescence staining of MCF-7 cell with CSB-RA011087MA2HU at 1:30, counter-stained with DAPI. The cells were fixed in 4% formaldehyde and blocked in 10% normal Goat Serum. The cells were then incubated with the antibody overnight at 4°C. The secondary antibody was Fluorescein (FITC) AffiniPure Goat Anti-Human IgG, Fc γ fragment specific.



Immunofluorescence staining of SH-SY5Y cell with CSB-RA011087MA2HU at 1:30, counter-stained with DAPI. The cells were fixed in 4% formaldehyde and blocked in 10% normal Goat Serum. The cells were then incubated with the antibody overnight at 4°C. The secondary antibody was Fluorescein (FITC) AffiniPure Goat Anti-Human IgG, Fc γ fragment specific.



Overlay Peak curve showing HeLa cells stained with CSB-RA011087MA2HU (red line) at 1:100. Then 10% normal goat serum to block non-specific protein-protein interactions followed by the antibody (1 μ g/1*10⁶ cells) for 45min at 4°C. The secondary antibody used was Fluorescein (FITC) AffiniPure Goat Anti-Human IgG, Fc γ fragment specific at 1:200 dilution for 35 min at 4°C. Control antibody (green line) was mouse IgG2a (1 μ g/1*10⁶ cells) used under the same conditions. Acquisition of >10,000 events was performed.

Usage

For Research Use Only. Not for use in diagnostic or therapeutic procedures.