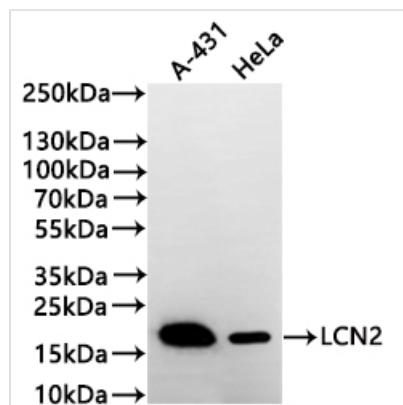




# LCN2 Recombinant Monoclonal Antibody

<b>Product Code</b>	CSB-RA012816MA1HU
<b>Storage</b>	Upon receipt, store at -20°C or -80°C. Avoid repeated freeze.
<b>Uniprot No.</b>	P80188
<b>Immunogen</b>	Recombinant Human LCN2 protein
<b>Species Reactivity</b>	Human
<b>Tested Applications</b>	ELISA, WB; Recommended dilution: WB:1:500-1:2000
<b>Form</b>	Liquid
<b>Conjugate</b>	Non-conjugated
<b>Storage Buffer</b>	Preservative: 0.03% Proclin 300 Constituents: 50% Glycerol, 0.01M PBS, PH 7.4
<b>Purification Method</b>	Affinity-chromatography
<b>Isotype</b>	hIgG1
<b>Clonality</b>	Monoclonal
<b>Product Type</b>	Recombinant Antibody
<b>Immunogen Species</b>	Homo sapiens (Human)
<b>Target Names</b>	LCN2
<b>Clone No.</b>	14E3

## Image



### Western Blot

Positive WB detected in: A-431 whole cell lysate(30µg), HeLa whole cell lysate(30µg)  
All lanes: LCN2 antibody at 1:1000

### Secondary

Goat polyclonal to human IgG at 1/40000 dilution  
Predicted band size: 22 kDa  
Observed band size: 22 kDa  
Exposure time: 2min

## Usage

For Research Use Only. Not for use in diagnostic or therapeutic procedures.