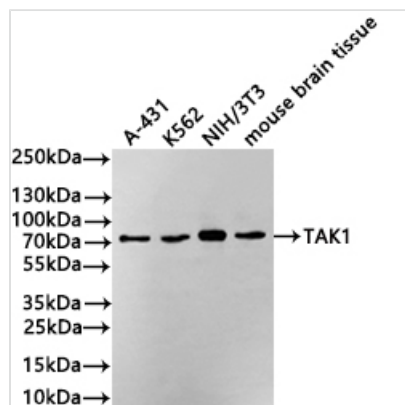




# MAP3K7 Recombinant Monoclonal Antibody

|                            |  |
|----------------------------|--|
| <b>Product Code</b>        | CSB-RA132828A0HU   |
| <b>Storage</b>             | Upon receipt, store at -20°C or -80°C. Avoid repeated freeze.                    |
| <b>Uniprot No.</b>         | O43318   |
| <b>Immunogen</b>           | A synthesized peptide from human MAP3K7 protein                                  |
| <b>Species Reactivity</b>  | Human, Mouse   |
| <b>Tested Applications</b> | ELISA, WB, FC; Recommended dilution: WB:1:500-1:2000, FC:1:50-1:200              |
| <b>Form</b>                | Liquid   |
| <b>Conjugate</b>           | Non-conjugated   |
| <b>Storage Buffer</b>      | Preservative: 0.03% Proclin 300<br>Constituents: 50% Glycerol, 0.01M PBS, PH 7.4 |
| <b>Purification Method</b> | Affinity-chromatography  |
| <b>Isotype</b>             | Rabbit IgG   |
| <b>Clonality</b>           | Monoclonal   |
| <b>Product Type</b>        | Recombinant Antibody   |
| <b>Immunogen Species</b>   | Homo sapiens (Human)   |
| <b>Target Names</b>        | MAP3K7   |
| <b>Clone No.</b>           | 2B12   |

## Image



### Western Blot

Positive WB detected in: A431 whole cell lysate(30µg), K562 whole cell lysate(30µg), NIH/3T3 whole cell lysate(30µg), Mouse brain tissue lysate(30µg)

All lanes: TAK1 antibody at 1:1000

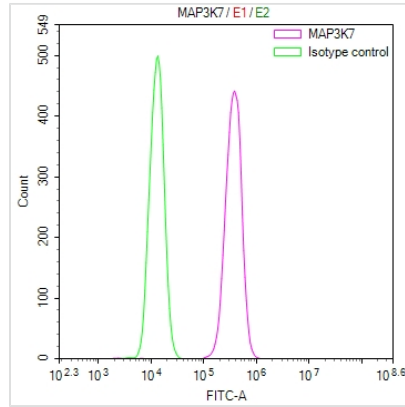
Secondary

Goat polyclonal to rabbit IgG at 1/40000 dilution

Predicted band size: 67 kDa

Observed band size: 75 kDa

Exposure time?3min



Overlay Peak curve showing 786-O cells stained with CSB-RA132828A0HU (red line) at 1:100. The cells were fixed in 4% formaldehyde and permeated by 0.2% TritonX-100 for 10min. Then 10% normal goat serum to block non-specific protein-protein interactions followed by the antibody (1ug/1\*10<sup>6</sup>cells) for 45min at 4?. The secondary antibody used was FITC-conjugated goat anti-rabbit IgG (H+L) at 1/200 dilution for 35min at 4?. Control antibody (green line) was Rabbit IgG (1ug/1\*10<sup>6</sup>cells) used under the same conditions. Acquisition of >10,000 events was performed.

## Usage

For Research Use Only. Not for use in diagnostic or therapeutic procedures.