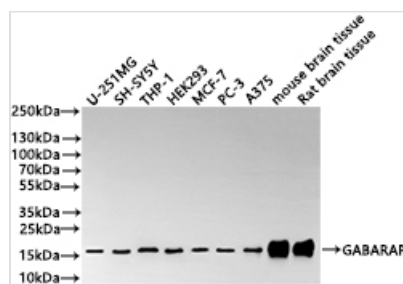




GABARAP Recombinant Monoclonal Antibody

Product Code	CSB-RA546399A0HU
Storage	Upon receipt, store at -20°C or -80°C. Avoid repeated freeze.
Uniprot No.	O95166
Immunogen	A synthesized peptide from human GABARAP protein
Species Reactivity	Human, Mouse, Rat
Tested Applications	ELISA, WB, IHC, FC; Recommended dilution: WB:1:500-1:2000, IHC:1:50-1:200, FC:1:50-1:200
Form	Liquid
Conjugate	Non-conjugated
Storage Buffer	Rabbit IgG in 10mM phosphate buffered saline , pH 7.4, 150mM sodium chloride, 0.05% BSA, 0.02% sodium azide and 50% glycerol.
Purification Method	Affinity-chromatography
Isotype	Rabbit IgG
Clonality	Monoclonal
Product Type	Recombinant Antibody
Immunogen Species	Homo sapiens (Human)
Target Names	GABARAP
Clone No.	3C1

Image



Western Blot

Positive WB detected in: U-251MG whole cell lysate(30µg), SH-SY5Y whole cell lysate(30µg), THP-1 whole cell lysate(30µg), HEK293 whole cell lysate(30µg), MCF-7 whole cell lysate(30µg), PC-3 whole cell lysate(30µg), A375 whole cell lysate(30µg), Mouse brain tissue lysate(30µg), Rat brain tissue lysate(30µg)

All lanes: GABARAP antibody at 1:1000

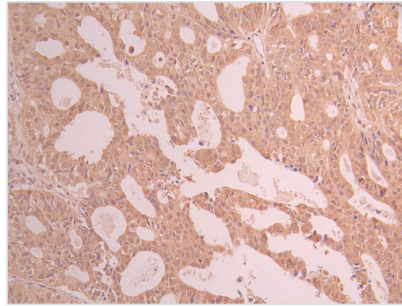
Secondary

Goat polyclonal to rabbit IgG at 1/40000 dilution

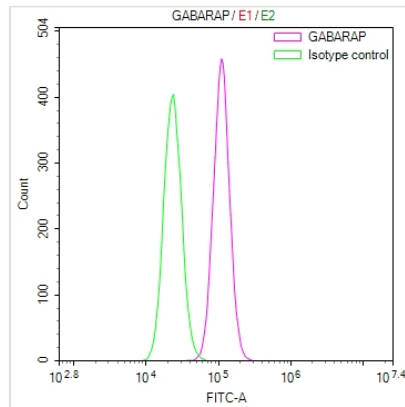
Predicted band size: 14 kDa

Observed band size: 17 kDa

Exposure time?2min



IHC image of CSB-RA546399A0HU diluted at 1:100 and staining in paraffin-embedded human ovarian cancer performed on a Leica BondTM system. After dewaxing and hydration, antigen retrieval was mediated by high pressure in a citrate buffer (pH 6.0). Section was blocked with 10% normal goat serum 30min at RT. Then primary antibody (1% BSA) was incubated at 4°C overnight. The primary is detected by a Goat anti-rabbit polymer IgG labeled by HRP and visualized using 0.05% DAB.



Overlay Peak curve showing PC-3 cells stained with CSB-RA546399A0HU (red line) at 1:100. The cells were fixed in 4% formaldehyde and permeated by 0.2% TritonX-100 for 10min. Then 10% normal goat serum to block non-specific protein-protein interactions followed by the antibody (1ug/1*10⁶ cells) for 45min at 4°C. The secondary antibody used was FITC-conjugated goat anti-rabbit IgG (H+L) at 1/200 dilution for 35min at 4°C. Control antibody (green line) was Rabbit IgG (1ug/1*10⁶ cells) used under the same conditions. Acquisition of >10,000 events was performed.

Usage

For Research Use Only. Not for use in diagnostic or therapeutic procedures.