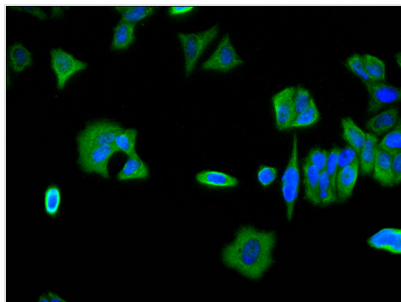




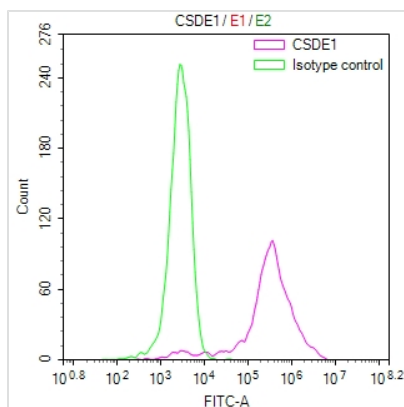
# CSDE1 Recombinant Monoclonal Antibody

<b>Product Code</b>	CSB-RA960273A0HU
<b>Storage</b>	Upon receipt, store at -20°C or -80°C. Avoid repeated freeze.
<b>Uniprot No.</b>	O75534
<b>Immunogen</b>	A synthesized peptide from human CSDE1 protein
<b>Species Reactivity</b>	Human
<b>Tested Applications</b>	ELISA, IF, FC; Recommended dilution: IF:1:50-1:200, FC:1:50-1:200
<b>Form</b>	Liquid
<b>Conjugate</b>	Non-conjugated
<b>Storage Buffer</b>	Preservative: 0.03% Proclin 300 Constituents: 50% Glycerol, 0.01M PBS, PH 7.4
<b>Purification Method</b>	Affinity-chromatography
<b>Isotype</b>	Rabbit IgG
<b>Clonality</b>	Monoclonal
<b>Product Type</b>	Recombinant Antibody
<b>Immunogen Species</b>	Homo sapiens (Human)
<b>Target Names</b>	CSDE1
<b>Clone No.</b>	11B11

## Image



Immunofluorescence staining of MCF-7 cell with CSB-RA960273A0HU at 1:50, counter-stained with DAPI. The cells were fixed in 4% formaldehyde, permeabilized using 0.2% Triton X-100 and blocked in 10% normal Goat Serum. The cells were then incubated with the antibody overnight at 4°C. The secondary antibody was Alexa Fluor 488-conjugated AffiniPure Goat Anti-Rabbit IgG(H+L).



Overlay Peak curve showing MCF-7 cells stained with CSB-RA960273A0HU (red line) at 1:100. The cells were fixed in 4% formaldehyde and permeated by 0.2% TritonX-100 for 10min. Then 10% normal goat serum to block non-specific protein-protein interactions followed by the antibody (1ug/1\*10<sup>6</sup>cells) for 45min at 4?. The secondary antibody used was FITC-conjugated goat anti-rabbit IgG (H+L) at 1/200 dilution for 35min at 4?. Control antibody (green line) was Rabbit IgG (1ug/1\*10<sup>6</sup>cells) used under the same conditions. Acquisition of >10,000 events was performed.



**Usage**

For Research Use Only. Not for use in diagnostic or therapeutic procedures.