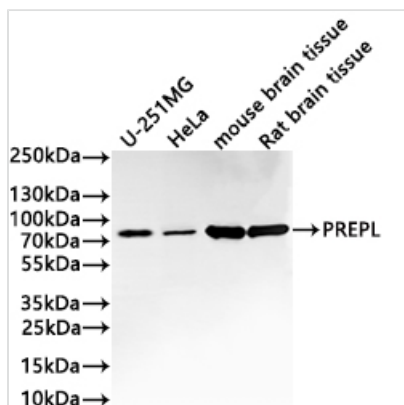




PREPL Recombinant Monoclonal Antibody

Product Code	CSB-RA033357A0HU
Storage	Upon receipt, store at -20°C or -80°C. Avoid repeated freeze.
Uniprot No.	Q4J6C6
Immunogen	A synthesized peptide from human PREPL protein
Species Reactivity	Human, Mouse, Rat
Tested Applications	ELISA, WB; Recommended dilution: WB:1:500-1:2000
Form	Liquid
Conjugate	Non-conjugated
Storage Buffer	Rabbit IgG in 10mM phosphate buffered saline , pH 7.4, 150mM sodium chloride, 0.05% BSA, 0.02% sodium azide and 50% glycerol.
Purification Method	Affinity-chromatography
Isotype	Rabbit IgG
Clonality	Monoclonal
Product Type	Recombinant Antibody
Immunogen Species	Homo sapiens (Human)
Target Names	PREPL
Clone No.	3G2

Image



Western Blot

Positive WB detected in: U-251MG whole cell lysate(30µg), HeLa whole cell lysate(30µg), Mouse brain tissue lysate(30µg), Rat brain tissue lysate(30µg)

All lanes: PREPL antibody at 1:1000

Secondary

Goat polyclonal to rabbit IgG at 1/40000 dilution

Predicted band size: 84 kDa

Observed band size: 84 kDa

Exposure time?2min

Usage

For Research Use Only. Not for use in diagnostic or therapeutic procedures.