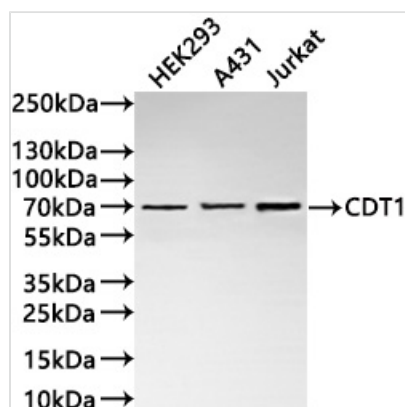




# CDT1 Recombinant Monoclonal Antibody

<b>Product Code</b>	CSB-RA138082A0HU
<b>Storage</b>	Upon receipt, store at -20°C or -80°C. Avoid repeated freeze.
<b>Uniprot No.</b>	Q9H211
<b>Immunogen</b>	A synthesized peptide from human CDT1 protein
<b>Species Reactivity</b>	Human
<b>Tested Applications</b>	ELISA, WB; Recommended dilution: WB:1:500-1:2000
<b>Form</b>	Liquid
<b>Conjugate</b>	Non-conjugated
<b>Storage Buffer</b>	Rabbit IgG in 10mM phosphate buffered saline , pH 7.4, 150mM sodium chloride, 0.05% BSA, 0.02% sodium azide and 50% glycerol.
<b>Purification Method</b>	Affinity-chromatography
<b>Isotype</b>	Rabbit IgG
<b>Clonality</b>	Monoclonal
<b>Product Type</b>	Recombinant Antibody
<b>Immunogen Species</b>	Homo sapiens (Human)
<b>Target Names</b>	CDT1
<b>Clone No.</b>	8H5

## Image



### Western Blot

Positive WB detected in: HEK293 whole cell lysate(30µg), A431 whole cell lysate(30µg), Jurkat whole cell lysate(30µg)

All lanes: CDT1 antibody at 1:1000

### Secondary

Goat polyclonal to rabbit IgG at 1/40000 dilution

Predicted band size: 60 kDa

Observed band size: 70 kDa

Exposure time?2min

## Usage

For Research Use Only. Not for use in diagnostic or therapeutic procedures.