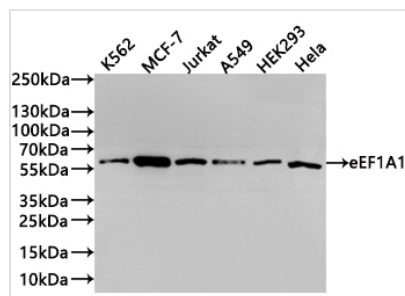




G6PD Recombinant Monoclonal Antibody

Product Code	CSB-RA063014A0HU
Storage	Upon receipt, store at -20°C or -80°C. Avoid repeated freeze.
Uniprot No.	P11413
Immunogen	A synthesized peptide from human G6PD protein
Species Reactivity	Human
Tested Applications	ELISA, WB; Recommended dilution: WB:1:500-1:2000
Form	Liquid
Conjugate	Non-conjugated
Storage Buffer	Preservative: 0.03% Proclin 300 Constituents: 50% Glycerol, 0.01M PBS, PH 7.4
Purification Method	Affinity-chromatography
Isotype	Rabbit IgG
Clonality	Monoclonal
Product Type	Recombinant Antibody
Immunogen Species	Homo sapiens (Human)
Target Names	G6PD
Clone No.	5E8

Image



Western Blot

Positive WB detected in: K562 whole cell lysate(30µg), MCF-7 whole cell lysate(30µg), Jurkat whole cell lysate(30µg), A549 whole cell lysate(30µg), HEK293 whole cell lysate(30µg), HeLa whole cell lysate(30µg)

All lanes:G6PD antibody at 1:1000

Secondary

Goat polyclonal to rabbit IgG at 1/40000 dilution

Predicted band size: 59 kDa

Observed band size: 59 kDa

Exposure time?2min40s

Usage

For Research Use Only. Not for use in diagnostic or therapeutic procedures.