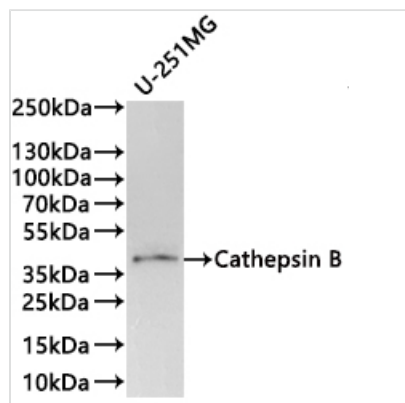




CTSB Recombinant Monoclonal Antibody

| | |
|----------------------------|--|
| Product Code | CSB-RA939625A0HU |
| Storage | Upon receipt, store at -20°C or -80°C. Avoid repeated freeze. |
| Uniprot No. | P07858 |
| Immunogen | A synthesized peptide from human CTSB protein |
| Species Reactivity | Human |
| Tested Applications | ELISA, WB; Recommended dilution: WB:1:500-1:2000 |
| Form | Liquid |
| Conjugate | Non-conjugated |
| Storage Buffer | Preservative: 0.03% Proclin 300 Constituents: 50% Glycerol, 0.01M PBS, PH 7.4 |
| Purification Method | Affinity-chromatography |
| Isotype | Rabbit IgG |
| Clonality | Monoclonal |
| Product Type | Recombinant Antibody |
| Immunogen Species | Homo sapiens (Human) |
| Target Names | CTSB |
| Clone No. | 9C11 |

Image



Western Blot

Positive WB detected in: U-251MG whole cell lysate(30µg)

All lanes: Cathepsin B antibody at 1:1000

Secondary

Goat polyclonal to rabbit IgG at 1/40000 dilution

Predicted band size: 38 kDa

Observed band size: 38 kDa

Exposure time?2min

Usage

For Research Use Only. Not for use in diagnostic or therapeutic procedures.