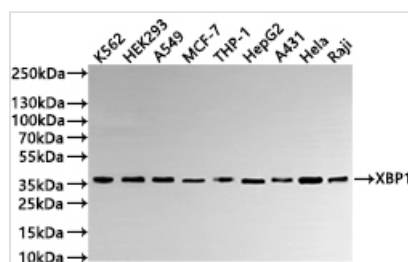




XBP1 Recombinant Monoclonal Antibody

Product Code	CSB-RA119872A0HU
Storage	Upon receipt, store at -20°C or -80°C. Avoid repeated freeze.
Uniprot No.	P17861
Immunogen	A synthesized peptide from human XBP1 protein
Species Reactivity	Human
Tested Applications	ELISA, WB, FC; Recommended dilution: WB:1:500-1:2000, FC:1:50-1:200
Form	Liquid
Conjugate	Non-conjugated
Storage Buffer	Preservative: 0.03% Proclin 300 Constituents: 50% Glycerol, 0.01M PBS, PH 7.4
Purification Method	Affinity-chromatography
Isotype	Rabbit IgG
Clonality	Monoclonal
Product Type	Recombinant Antibody
Immunogen Species	Homo sapiens (Human)
Target Names	XBP1
Clone No.	1C8

Image



Western Blot

Positive WB detected in: K562 whole cell lysate(30µg), HEK293 whole cell lysate(30µg), A549 whole cell lysate(30µg), MCF-7 whole cell lysate(30µg), THP-1 whole cell lysate(30µg), HepG2 whole cell lysate(30µg), A431 whole cell lysate(30µg), HeLa whole cell lysate(30µg), Raji whole cell lysate(30µg)

All lanes: XBP1 antibody at 1:1000

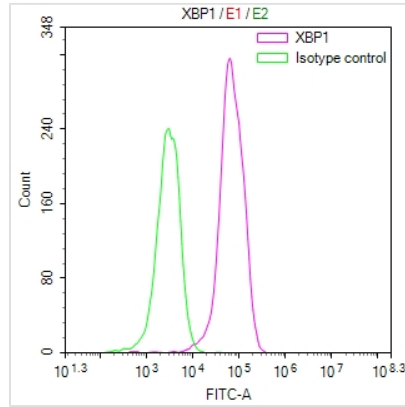
Secondary

Goat polyclonal to rabbit IgG at 1/40000 dilution

Predicted band size: 29 kDa

Observed band size: 35 kDa

Exposure time?2min



Overlay Peak curve showing MCF-7 cells stained with CSB-RA119872A0HU (red line) at 1:100. The cells were fixed in 4% formaldehyde and permeated by 0.2% TritonX-100 for 10min. Then 10% normal goat serum to block non-specific protein-protein interactions followed by the antibody (1ug/1*10⁶cells) for 45min at 4?. The secondary antibody used was FITC-conjugated goat anti-rabbit IgG (H+L) at 1/200 dilution for 35min at 4?. Control antibody (green line) was Rabbit IgG (1ug/1*10⁶cells) used under the same conditions. Acquisition of >10,000 events was performed.

Usage

For Research Use Only. Not for use in diagnostic or therapeutic procedures.