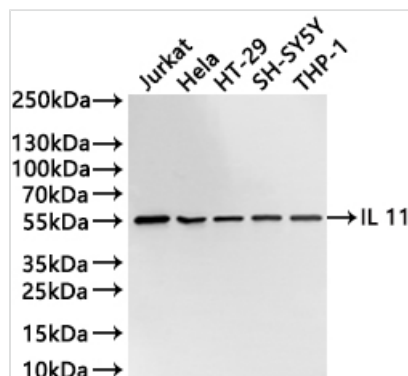




IL11RA Recombinant Monoclonal Antibody

Product Code	CSB-RA184907A0HU
Storage	Upon receipt, store at -20°C or -80°C. Avoid repeated freeze.
Uniprot No.	Q14626
Immunogen	A synthesized peptide from human IL11RA protein
Species Reactivity	Human
Tested Applications	ELISA, WB, IHC; Recommended dilution: WB:1:500-1:2000, IHC:1:50-1:200
Form	Liquid
Conjugate	Non-conjugated
Storage Buffer	Preservative: 0.03% Proclin 300 Constituents: 50% Glycerol, 0.01M PBS, PH 7.4
Purification Method	Affinity-chromatography
Isotype	Rabbit IgG
Clonality	Monoclonal
Product Type	Recombinant Antibody
Immunogen Species	Homo sapiens (Human)
Target Names	IL11RA
Clone No.	6B2

Image

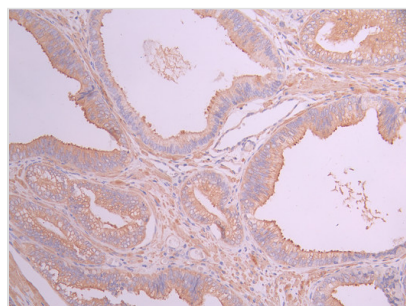


Western Blot

Positive WB detected in: Jurkat whole cell lysate(30µg), HeLa whole cell lysate(30µg), HT-29 whole cell lysate(30µg), SH-SY5Y whole cell lysate(30µg), THP-1 whole cell lysate(30µg)
All lanes: IL 11 antibody at 1:1000

Secondary

Goat polyclonal to rabbit IgG at 1/40000 dilution
Predicted band size: 45 kDa
Observed band size: 55 kDa
Exposure time?20s



IHC image of CSB-RA184907A0HU diluted at 1:100 and staining in paraffin-embedded human prostate cancer performed on a Leica Bond™ system. After dewaxing and hydration, antigen retrieval was mediated by high pressure in a citrate buffer (pH 6.0). Section was blocked with 10% normal goat serum 30min at RT. Then primary antibody (1% BSA) was incubated at 4°C overnight. The primary is detected by a Goat anti-rabbit polymer IgG labeled by HRP and visualized using 0.05% DAB.



Usage

For Research Use Only. Not for use in diagnostic or therapeutic procedures.