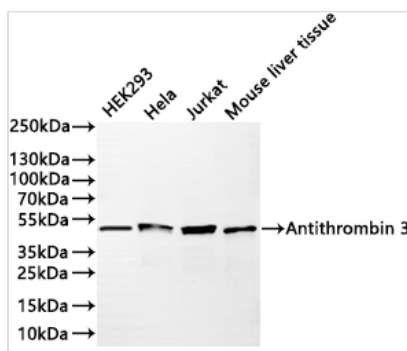




SERPINA1 Recombinant Monoclonal Antibody

Product Code	CSB-RA977406A0HU
Storage	Upon receipt, store at -20°C or -80°C. Avoid repeated freeze.
Uniprot No.	P01009
Immunogen	A synthesized peptide from human SERPINA1 protein
Species Reactivity	Human, Mouse
Tested Applications	ELISA, WB, IF, FC; Recommended dilution: WB:1:500-1:2000, IF:1:50-1:200, FC:1:50-1:200
Form	Liquid
Conjugate	Non-conjugated
Storage Buffer	Preservative: 0.03% Proclin 300 Constituents: 50% Glycerol, 0.01M PBS, PH 7.4
Purification Method	Affinity-chromatography
Isotype	Rabbit IgG
Clonality	Monoclonal
Product Type	Recombinant Antibody
Immunogen Species	Homo sapiens (Human)
Target Names	SERPINA1
Clone No.	11G10

Image



Western Blot

Positive WB detected in: HEK293 whole cell lysate (30µg), Hela whole cell lysate (30µg), Jurkat whole cell lysate (30µg), Mouse liver tissue lysate (30µg)

All lanes: Antithrombin 3 antibody at 1:1000

Secondary

Goat polyclonal to rabbit IgG at 1/40000 dilution
10,000 events was performed.

Usage

For Research Use Only. Not for use in diagnostic or therapeutic procedures.