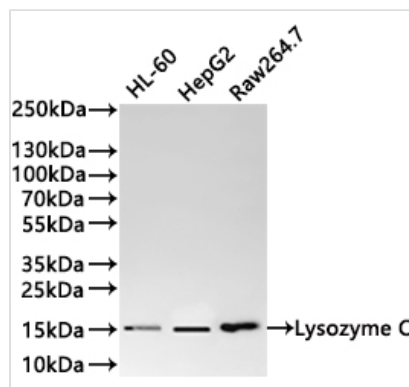




# LYZ Recombinant Monoclonal Antibody

|                            |  |
|----------------------------|--|
| <b>Product Code</b>        | CSB-RA058919A0HU   |
| <b>Storage</b>             | Upon receipt, store at -20°C or -80°C. Avoid repeated freeze.                    |
| <b>Uniprot No.</b>         | P61626   |
| <b>Immunogen</b>           | A synthesized peptide from human LYZ protein                                     |
| <b>Species Reactivity</b>  | Human  |
| <b>Tested Applications</b> | ELISA, WB; Recommended dilution: WB:1:500-1:2000                                 |
| <b>Form</b>                | Liquid   |
| <b>Conjugate</b>           | Non-conjugated   |
| <b>Storage Buffer</b>      | Preservative: 0.03% Proclin 300<br>Constituents: 50% Glycerol, 0.01M PBS, PH 7.4 |
| <b>Purification Method</b> | Affinity-chromatography  |
| <b>Isotype</b>             | Rabbit IgG   |
| <b>Clonality</b>           | Monoclonal   |
| <b>Product Type</b>        | Recombinant Antibody   |
| <b>Immunogen Species</b>   | Homo sapiens (Human)   |
| <b>Target Names</b>        | LYZ  |
| <b>Clone No.</b>           | 10H11  |

## Image



### Western Blot

Positive WB detected in: HL-60 whole cell lysate(30µg), HepG2 whole cell lysate(30µg), Raw264.7 whole cell lysate(30µg)

All lanes: Lysozyme C antibody at 1:1000

Secondary

Goat polyclonal to rabbit IgG at 1/40000 dilution

Predicted band size: 17 kDa

Observed band size: 15 kDa

Exposure time?1min

## Usage

For Research Use Only. Not for use in diagnostic or therapeutic procedures.