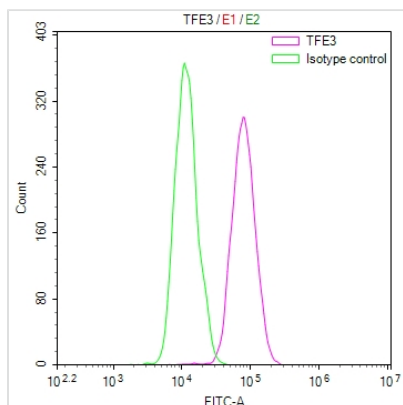




TFE3 Recombinant Monoclonal Antibody

Product Code	CSB-RA085988A0HU
Storage	Upon receipt, store at -20°C or -80°C. Avoid repeated freeze.
Uniprot No.	P19532
Immunogen	A synthesized peptide from human TFE3 protein
Species Reactivity	Human
Tested Applications	ELISA, FC; Recommended dilution: FC:1:50-1:200
Form	Liquid
Conjugate	Non-conjugated
Storage Buffer	Preservative: 0.03% Proclin 300 Constituents: 50% Glycerol, 0.01M PBS, PH 7.4
Purification Method	Affinity-chromatography
Isotype	Rabbit IgG
Clonality	Monoclonal
Product Type	Recombinant Antibody
Immunogen Species	Homo sapiens (Human)
Target Names	TFE3
Clone No.	6E8

Image



Overlay Peak curve showing HepG2 cells stained with CSB-RA085988A0HU (red line) at 1:100. The cells were fixed in 4% formaldehyde and permeated by 0.2% TritonX-100 for 10min. Then 10% normal goat serum to block non-specific protein-protein interactions followed by the antibody (1ug/1*10⁶cells) for 45min at 4?. The secondary antibody used was FITC-conjugated goat anti-rabbit IgG (H+L) at 1/200 dilution for 35min at 4?. Control antibody (green line) was Rabbit IgG (1ug/1*10⁶cells) used under the same conditions. Acquisition of >10,000 events was performed.

Usage

For Research Use Only. Not for use in diagnostic or therapeutic procedures.