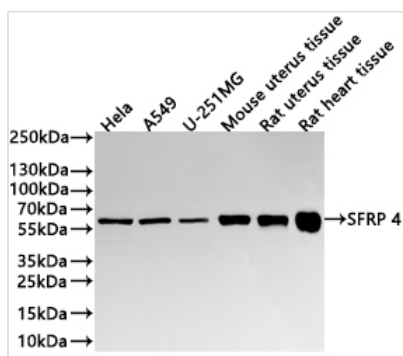




SFRP4 Recombinant Monoclonal Antibody

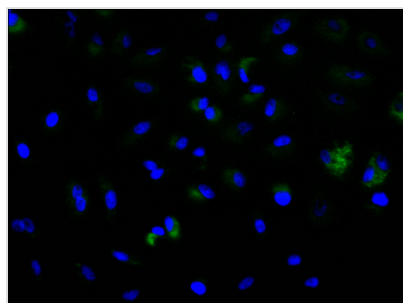
Product Code	CSB-RA104640A0HU
Storage	Upon receipt, store at -20°C or -80°C. Avoid repeated freeze.
Uniprot No.	Q6FHJ7
Immunogen	A synthesized peptide from human SFRP4 protein
Species Reactivity	Human, Mouse, Rat
Tested Applications	ELISA, WB, IF, FC; Recommended dilution: WB:1:500-1:2000, IF:1:50-1:200, FC:1:50-1:200
Form	Liquid
Conjugate	Non-conjugated
Storage Buffer	Preservative: 0.03% Proclin 300 Constituents: 50% Glycerol, 0.01M PBS, PH 7.4
Purification Method	Affinity-chromatography
Isotype	Rabbit IgG
Clonality	Monoclonal
Product Type	Recombinant Antibody
Immunogen Species	Homo sapiens (Human)
Target Names	SFRP4
Clone No.	14C1

Image

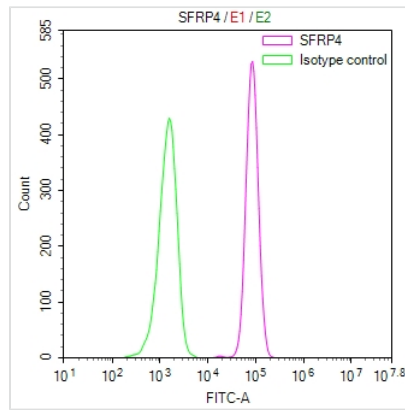


Western Blot

Positive WB detected in: HeLa whole cell lysate(30µg), A549 whole cell lysate(30µg), U-251MG whole cell lysate(30µg), Mouse uterus tissue lysate(30µg), Rat uterus tissue lysate(30µg), Rat heart tissue lysate(30µg)
All lanes: SFRP 4 antibody at 1:1000
Secondary
Goat polyclonal to rabbit IgG at 1/40000 dilution
Predicted band size: 40 kDa
Observed band size: 60 kDa
Exposure time?2min



Immunofluorescence staining of A549 cell with CSB-RA104640A0HU at 1:50, counter-stained with DAPI. The cells were fixed in 4% formaldehyde, permeabilized using 0.2% Triton X-100 and blocked in 10% normal Goat Serum. The cells were then incubated with the antibody overnight at 4°C. The secondary antibody was Alexa Fluor 488-conjugated AffiniPure Goat Anti-Rabbit IgG(H+L).



Overlay Peak curve showing A549 cells stained with CSB-RA104640A0HU (red line) at 1:100. The cells were fixed in 4% formaldehyde and permeated by 0.2% TritonX-100 for 10min. Then 10% normal goat serum to block non-specific protein-protein interactions followed by the antibody (1ug/1*10⁶cells) for 45min at 4?. The secondary antibody used was FITC-conjugated goat anti-rabbit IgG (H+L) at 1/200 dilution for 35min at 4?. Control antibody (green line) was Rabbit IgG (1ug/1*10⁶cells) used under the same conditions. Acquisition of >10,000 events was performed.

Usage

For Research Use Only. Not for use in diagnostic or therapeutic procedures.