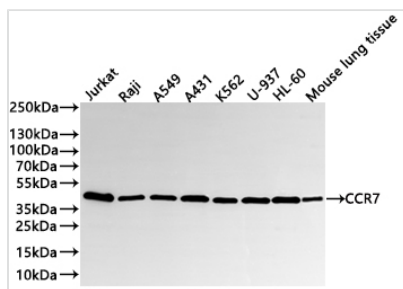




CCR7 Recombinant Monoclonal Antibody

Product Code	CSB-RA215587A0HU
Storage	Upon receipt, store at -20°C or -80°C. Avoid repeated freeze.
Uniprot No.	P32248
Immunogen	A synthesized peptide from human CCR7 protein
Species Reactivity	Human, Mouse
Tested Applications	ELISA, WB, IF; Recommended dilution: WB:1:500-1:2000, IF:1:50-1:200
Form	Liquid
Conjugate	Non-conjugated
Storage Buffer	Preservative: 0.03% Proclin 300 Constituents: 50% Glycerol, 0.01M PBS, PH 7.4
Purification Method	Affinity-chromatography
Isotype	Rabbit IgG
Clonality	Monoclonal
Product Type	Recombinant Antibody
Immunogen Species	Homo sapiens (Human)
Target Names	CCR7
Clone No.	22E12

Image

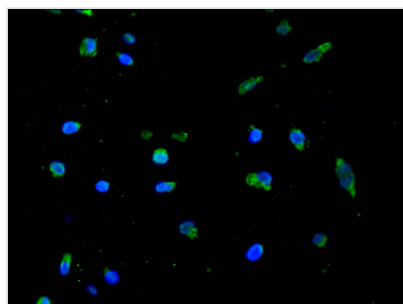


Western Blot

Positive WB detected in: Jurkat whole cell lysate(30µg), Raji whole cell lysate(30µg), A549 whole cell lysate(30µg), A431 whole cell lysate(30µg), K562 whole cell lysate(30µg), U-937 whole cell lysate(30µg), HL-60 whole cell lysate(30µg), Mouse lung tissue lysate(30µg)
All lanes: CCR7 antibody at 1:1000

Secondary

Goat polyclonal to rabbit IgG at 1/40000 dilution
Predicted band size: 43 kDa
Observed band size: 43 kDa
Exposure time?20s



Immunofluorescence staining of A549 cell with CSB-RA215587A0HU at 1:50, counter-stained with DAPI. The cells were fixed in 4% formaldehyde and blocked in 10% normal Goat Serum. The cells were then incubated with the antibody overnight at 4°C. The secondary antibody was Alexa Fluor 488-conjugated AffiniPure Goat Anti-Rabbit IgG(H+L).



Usage

For Research Use Only. Not for use in diagnostic or therapeutic procedures.