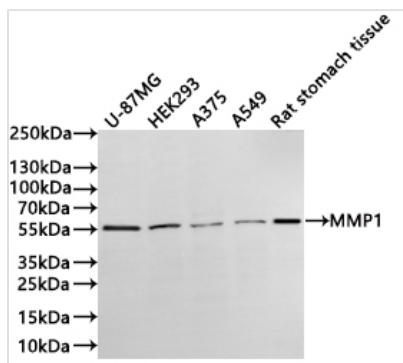




# MMP1 Recombinant Monoclonal Antibody

<b>Product Code</b>	CSB-RA212566A0HU
<b>Storage</b>	Upon receipt, store at -20°C or -80°C. Avoid repeated freeze.
<b>Uniprot No.</b>	P03956
<b>Immunogen</b>	A synthesized peptide from human MMP1 protein
<b>Species Reactivity</b>	Human, Rat
<b>Tested Applications</b>	ELISA, WB; Recommended dilution: WB:1:500-1:2000
<b>Form</b>	Liquid
<b>Conjugate</b>	Non-conjugated
<b>Storage Buffer</b>	Preservative: 0.03% Proclin 300 Constituents: 50% Glycerol, 0.01M PBS, PH 7.4
<b>Purification Method</b>	Affinity-chromatography
<b>Isotype</b>	Rabbit IgG
<b>Clonality</b>	Monoclonal
<b>Product Type</b>	Recombinant Antibody
<b>Immunogen Species</b>	Homo sapiens (Human)
<b>Target Names</b>	MMP1
<b>Clone No.</b>	2B5

## Image



### Western Blot

Positive WB detected in: U-87MG whole cell lysate(30µg), HEK293 whole cell lysate(30µg), A375 whole cell lysate(30µg), A549 whole cell lysate(30µg), Rat stomach tissue lysate(30µg)  
All lanes: MMP1 antibody at 1:1000

### Secondary

Goat polyclonal to rabbit IgG at 1/40000 dilution  
Predicted band size: 54 kDa  
Observed band size: 55 kDa  
Exposure time?3min

## Usage

For Research Use Only. Not for use in diagnostic or therapeutic procedures.