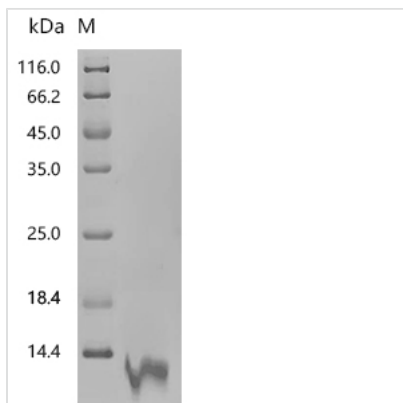


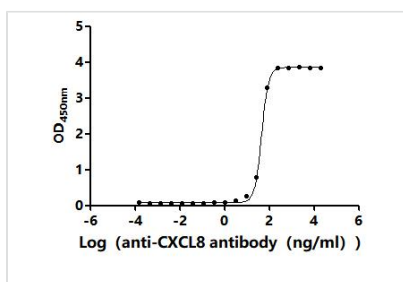


Recombinant Human Interleukin-8 (CXCL8), partial (Active)

Product Code	CSB-YP011671HU1
Abbreviation	Recombinant Human CXCL8 protein, partial (Active)
Storage	The shelf life is related to many factors, storage state, buffer ingredients, storage temperature and the stability of the protein itself. Generally, the shelf life of liquid form is 6 months at -20°C/-80°C. The shelf life of lyophilized form is 12 months at -20°C/-80°C.
Uniprot No.	P10145
Form	Lyophilized powder
Storage Buffer	Lyophilized from a 0.2 µm sterile filtered PBS, 6% Trehalose, pH 7.4
Product Type	Recombinant Protein
Immunogen Species	Homo sapiens (Human)
Biological Activity	Measured by its binding ability in a functional ELISA. Immobilized Human CXCL8 at 2 µg/mL can bind Anti-CXCL8 recombinant antibody (CSB-RA011671MA1HU). The EC50 is 43.95-46.76 ng/mL.
Purity	Greater than 95% as determined by SDS-PAGE.
Sequence	SAKELRCQCIKTYSKPFHPKFIKELRVIESGPHCANTEIIVKLSGDGRELCLDPKE NWVQRVVEKFLKRAENS
Source	Yeast
Target Names	CXCL8
Expression Region	28-99aa
Notes	Repeated freezing and thawing is not recommended. Store working aliquots at 4°C for up to one week.
Tag Info	C-terminal 10xHis-tagged
Mol. Weight	10.4 kDa
Protein Length	Partial
Image	



(Tris-Glycine gel) Discontinuous SDS-PAGE (reduced) with 5% enrichment gel and 15% separation gel.



Activity
Measured by its binding ability in a functional ELISA. Immobilized Human CXCL8 at 2 µg/ml can bind Anti-CXCL8 recombinant antibody (CSB-RA011671MA1HU). The EC₅₀ is 43.95-46.76 ng/mL.

Endotoxin

Less than 1.0 EU/ug as determined by LAL method.

Reconstitution

We recommend that this vial be briefly centrifuged prior to opening to bring the contents to the bottom. Please reconstitute protein in deionized sterile water to a concentration of 0.1-1.0 mg/mL. We recommend to add 5-50% of glycerol (final concentration) and aliquot for long-term storage at -20°C/-80°C. Our default final concentration of glycerol is 50%. Customers could use it as reference.

Shelf Life

The shelf life is related to many factors, storage state, buffer ingredients, storage temperature and the stability of the protein itself. Generally, the shelf life of liquid form is 6 months at -20°C/-80°C. The shelf life of lyophilized form is 12 months at -20°C/-80°C.