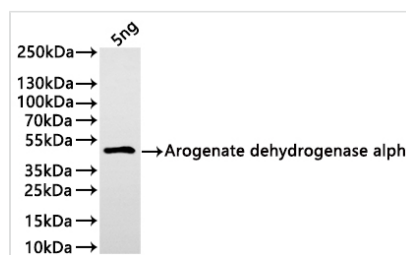




Arogenate dehydrogenase alpha Antibody

Product Code	CSB-PA6815XA01BSQ
Storage	Upon receipt, store at -20°C or -80°C. Avoid repeated freeze.
Uniprot No.	A0A223FUH0
Immunogen	Recombinant Beta vulgaris (Sugar beet) Arogenate dehydrogenase alpha protein (85-369aa)
Raised In	Rabbit
Species Reactivity	Beta vulgaris (Sugar beet)
Tested Applications	ELISA, WB; Recommended dilution: WB:1:500-1:5000
Form	Liquid
Conjugate	Non-conjugated
Storage Buffer	Preservative: 0.03% Proclin 300 Constituents: 50% Glycerol, 0.01M PBS, pH 7.4
Purification Method	Antigen Affinity Purified
Isotype	IgG
Clonality	Polyclonal
Product Type	Polyclonal Antibody
Immunogen Species	Beta vulgaris (Sugar beet)
Target Names	Arogenate dehydrogenase alpha

Image



Western Blot

Positive WB detected in: recombinant protein

All lanes: Arogenate dehydrogenase alpha

Antibody at 1:1000

Secondary

Goat polyclonal to rabbit IgG at 1/20000 dilution

Predicted band size: 39.3 kDa

Observed band size: 40 kDa

Usage

For Research Use Only. Not for use in diagnostic or therapeutic procedures.