

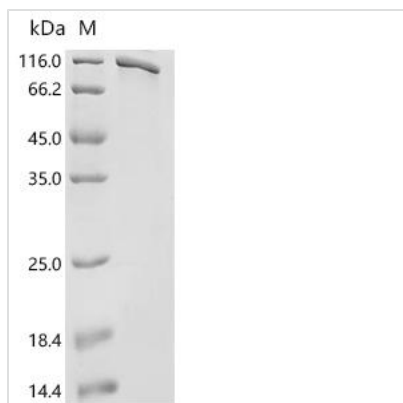


Recombinant Human Endoplasmin (HSP90B1)

Product Code	CSB-EP010814HU
Abbreviation	Recombinant Human HSP90B1 protein
Storage	The shelf life is related to many factors, storage state, buffer ingredients, storage temperature and the stability of the protein itself. Generally, the shelf life of liquid form is 6 months at -20°C/-80°C. The shelf life of lyophilized form is 12 months at -20°C/-80°C.
Uniprot No.	P14625
Form	Liquid or Lyophilized powder
Storage Buffer	If the delivery form is liquid, the default storage buffer is Tris/PBS-based buffer, 5%-50% glycerol. If the delivery form is lyophilized powder, the buffer before lyophilization is Tris/PBS-based buffer, 6% Trehalose, pH 8.0.
Product Type	Recombinant Human Endoplasmin (HSP90B1)
Immunogen Species	Homo sapiens (Human)
Sensitivity	Not Test
Purity	Greater than 85% as determined by SDS-PAGE.
Sequence	DDEVVDVGTVEEDLGKSREGSRTDDEVVQREEEAIQLDGLNASQIRELREKSE KFAFQAEVNRMMKLIINSLYKNKEIFLRELISNASDALDKIRLISLTDENALSGNE ELTVKIKCDKEKNLLHVTDGTGVGMTREELVKNLGTIAKSGTSEFLNKMTEAQED GQSTSELIGQFGVGFYSAFLVADKVIVTSKHNNDTQHIWESDSNEFSVIADPRG NTLGRGTTITLVLKEEASDYLELDTIKNLVKKYSQFINFPIYVWSSKTETVEEPM EEEEAAKEEKEESDDEAAVEEEEEKPKTKKVEKTVWDWELMNDIKPIWQR PSKEVEEDEYKAFYKSFESKESDDPMAYIHFTAEGEVTFKSILFVPTSAPRGLFD EYGSKKS DYIKLYVRRVITDDFHDMMPKYLNFKGVVDSDDLPLNVSRETLQ QHKLLKVIRKLVKRLTDMIKKIADDKYNDTFWKEFGTNIKLGVIEDHSNRTRLA KLLRFQSSHHPTDITSLDQYVERMKEKQDKIYFMAGSSRKEAESSPFVERLLK KGYEVIYLTEPVDEYCIQALPEFDGKRFQNVAKEGVKFDSEKTKESREAVEK EFEPLLNWMKDKALKDKIEKAVVSQRLTESPCALVASQYGWSGNMERIMKAQ AYQTGKDISTNYYASQKKTFEINPRHPLIRDMLRRIKEDDDKTVLDLAVVLFET ATLRSGYLLPDTKAYGDRIERMLRSLNIDPDAKVEEEPEEEPEETAEDTTEDT EQDEDEEMDVGTDDEEEETAKESTAEKDEL
Research Area	Metabolism
Source	E.coli
Target Names	HSP90B1
Expression Region	22-803aa
Notes	Repeated freezing and thawing is not recommended. Store working aliquots at 4°C for up to one week.
Tag Info	N-terminal 6xHis-tagged
Mol. Weight	97.1 kDa

**Protein Length**

Full Length of Mature Protein

Image

(Tris-Glycine gel) Discontinuous SDS-PAGE (reduced) with 5% enrichment gel and 15% separation gel.

Reconstitution

We recommend that this vial be briefly centrifuged prior to opening to bring the contents to the bottom. Please reconstitute protein in deionized sterile water to a concentration of 0.1-1.0 mg/mL. We recommend to add 5-50% of glycerol (final concentration) and aliquot for long-term storage at -20°C/-80°C. Our default final concentration of glycerol is 50%. Customers could use it as reference.

Shelf Life

The shelf life is related to many factors, storage state, buffer ingredients, storage temperature and the stability of the protein itself. Generally, the shelf life of liquid form is 6 months at -20°C/-80°C. The shelf life of lyophilized form is 12 months at -20°C/-80°C.