



Recombinant Human Solute carrier family 2, facilitated glucose transporter member 1 (SLC2A1)-VLPs (Active)

Product Code	CSB-MP021546HU(A4)d7
Abbreviation	Recombinant Human SLC2A1 protein-VLPs (Active)
Storage	The shelf life is related to many factors, storage state, buffer ingredients, storage temperature and the stability of the protein itself. Generally, the shelf life of liquid form is 6 months at -20°C/-80°C. The shelf life of lyophilized form is 12 months at -20°C/-80°C.
Uniprot No.	P11166
Form	Lyophilized powder
Storage Buffer	Lyophilized from a 0.2 µm sterile filtered PBS, 6% Trehalose, pH 7.4
Product Type	Recombinant Protein
Immunogen Species	Homo sapiens (Human)
Biological Activity	Measured by its binding ability in a functional ELISA. Immobilized Human SLC2A1 at 10 µg/mL can bind Anti-SLC2A1 recombinant antibody(CSB-RA021546MA1HU). The EC50 is 5.023-6.275 ng/mL.The VLPs (CSB-MP3838) is negative control.
Purity	/
Sequence	MEPSSKKL TGRMLAVGGAVL GSLQFGYNTGVINAPQKVIEEFYNQTWVHRY GESILPTTLTTLW SLSVAIFSVGGMIGSFSVGLFVNRFGR RN SMLMMNLLAFVS AVLMGF SKLGKSFEM LILGRFIIGVYCG LTTGFVPMYVGEVSPTALRGALGTLH QLGIVVGILIAQVFG LDSIMGNKDLW P LLLSIIFIPALLQCIVLPFCPESPRFLLINR NEENRAKSVLKKLRGTADV THDLQEMKEESRQMMREKKVTILELFRSPAYRQ PILIAVVLQLSQQLSGINAVFY YSTSIFEKAGVQQPVYATIGSGIVNTAFTVVS LF VVERAGRRTLHLIGLAGMAGCAILMTIALALLEQLPWMSYLSIVAIFGFVAF FEV GPGPIPW FIVAELFSQGPRPAAIAVAGFSN WTSNFIVGMCFQYVEQLCGPYVFI IFTVLLV LFFIFTYFKVPETKGRTFDEIASGFRQGGASQSDKTPEELFHPLGADS QV
Source	Mammalian cell
Target Names	SLC2A1
Expression Region	1-492aa
Notes	The VLPs are expressed from human 293 cells (HEK293). Mix the sample gently by repeatedly pipetting it up and down. Do not vortex. Repeated freezing and thawing is not recommended. Store the protein at -20°C/-80°C upon receiving it, and ensure to avoid repeated freezing and thawing, otherwise, it will affect the protein activity. The immunization strategy should be optimized (antigen dose, regimen and adjuvant).

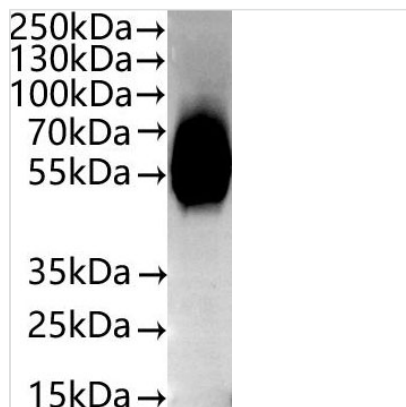


Tag Info C-terminal 10xHis-tagged

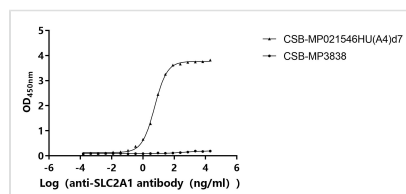
Mol. Weight 55.5 kDa

Protein Length Full Length

Image



CSB-MP021546HU(A4)d7 is detected by Mouse anti-10*His monoclonal antibody.



Activity

Measured by its binding ability in a functional ELISA. Immobilized Human SLC2A1 at 10 µg/ml can bind Anti-SLC2A1 recombinant antibody(CSB-RA021546MA1HU). The EC₅₀ is 5.023-6.275 ng/mL. The VLPs (CSB-MP3838) is negative control.

Endotoxin Less than 1.0 EU/ug as determined by LAL method.

Reconstitution We recommend that this vial be briefly centrifuged prior to opening to bring the contents to the bottom. Please reconstitute protein in deionized sterile water to a concentration of 0.1-1.0 mg/mL. We recommend to add 5-50% of glycerol (final concentration) and aliquot for long-term storage at -20°C/-80°C. Our default final concentration of glycerol is 50%. Customers could use it as reference.

Shelf Life The shelf life is related to many factors, storage state, buffer ingredients, storage temperature and the stability of the protein itself. Generally, the shelf life of liquid form is 6 months at -20°C/-80°C. The shelf life of lyophilized form is 12 months at -20°C/-80°C.