

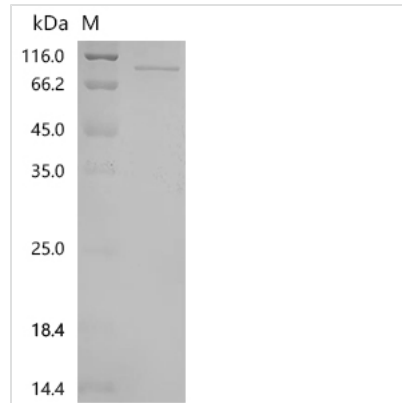


Recombinant Sheep P-selectin (SELP)

Product Code	CSB-EP020978SH
Abbreviation	Recombinant Sheep SELP protein
Storage	The shelf life is related to many factors, storage state, buffer ingredients, storage temperature and the stability of the protein itself. Generally, the shelf life of liquid form is 6 months at -20°C/-80°C. The shelf life of lyophilized form is 12 months at -20°C/-80°C.
Uniprot No.	P98109
Form	Liquid or Lyophilized powder
Storage Buffer	If the delivery form is liquid, the default storage buffer is Tris/PBS-based buffer, 5%-50% glycerol. If the delivery form is lyophilized powder, the buffer before lyophilization is Tris/PBS-based buffer, 6% Trehalose, pH 8.0.
Product Type	Recombinant Sheep P-selectin (SELP)
Immunogen Species	Ovis aries (Sheep)
Sensitivity	Not Test
Purity	Greater than 90% as determined by SDS-PAGE.
Sequence	LMTQKEVSAWTYHYSDKPYSWNYSRAFCQKYYTDLVAIQNKNEIAYLNETIPY YNSYYWIGIRKIDNKWTWVGTKKTLTEEAENWADNEPNNKKNQDCVEIYIKS PSAPGKWNDEPCGKRKRALCYRASCQDMSCSKQGECIETIGNYTCSCYPGF YGPECEYVRECGEFDLPQNVHMNC SHPLGNFSFKSQCSFHCAEGYALNGPR ELECLASGIWTNSPPQCVAVQCPALKSPEQGSMSCFHSAKAFQHQSSCSFSC EEGFTLVGPEVVHCTALGVWTAPTVC KAIACESLESPVHGSMDCSPSPRAF QYNTSCSFRC AEGFTLRGADTVRCADSGEWTAPAPVCQALQCQDLPTS NKA RVNCSHPFGDFRYQSTCSFTCDEGSFLVGASVLQCLDTGNWDAPFPECQAV TCAPLPNPQNGEKT CVQPLGGSSYKSTCWFTCHEGFSLSGPERLDCTPSGH WTGSPPTCEASKCPELSAPEQGS LDCPDTHGEFIVGSICHFSCNEGLKLEGSN HVECTASGRWTAPPPSCKVDTVSAPAPGLRCP SLIAPNQGTMSCQHHLRNFG LNTTCHFGCKAGFTLMGESALQCRPSRQWTAVAPT CRAVKCSKLPVTEPIVM NCSNPWGNFSYGSTCSFHCPEGQLLNGSERTACQENGQWSTTMPTCQAGP LTIQEALTYIGGAAAGTTGLVTSSILLALLRRRRRQKDDGKSPLNPQSHLGTYG VFTNAAFDPSP
Research Area	Others
Source	E.coli
Target Names	SELP
Expression Region	33-769aa
Notes	Repeated freezing and thawing is not recommended. Store working aliquots at 4°C for up to one week.
Tag Info	N-terminal 10xHis-tagged
Mol. Weight	86.5 kDa

**Protein Length**

Full Length of Mature Protein

Image

(Tris-Glycine gel) Discontinuous SDS-PAGE (reduced) with 5% enrichment gel and 15% separation gel.

Reconstitution

We recommend that this vial be briefly centrifuged prior to opening to bring the contents to the bottom. Please reconstitute protein in deionized sterile water to a concentration of 0.1-1.0 mg/mL. We recommend to add 5-50% of glycerol (final concentration) and aliquot for long-term storage at -20°C/-80°C. Our default final concentration of glycerol is 50%. Customers could use it as reference.

Shelf Life

The shelf life is related to many factors, storage state, buffer ingredients, storage temperature and the stability of the protein itself. Generally, the shelf life of liquid form is 6 months at -20°C/-80°C. The shelf life of lyophilized form is 12 months at -20°C/-80°C.