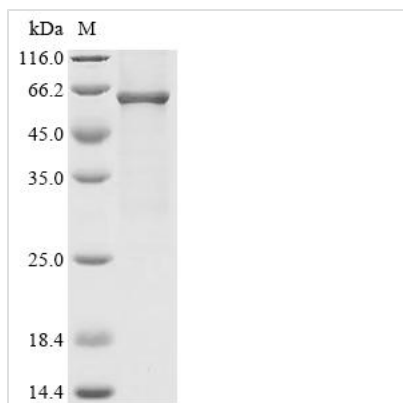




Recombinant Arabidopsis thaliana Phosphatidylserine decarboxylase proenzyme 1, mitochondrial (PSD1)

Product Code	CSB-EP7207DOA(A4)
Abbreviation	Recombinant Mouse-ear cress PSD1 protein
Storage	The shelf life is related to many factors, storage state, buffer ingredients, storage temperature and the stability of the protein itself. Generally, the shelf life of liquid form is 6 months at -20°C/-80°C. The shelf life of lyophilized form is 12 months at -20°C/-80°C.
Uniprot No.	Q84V22
Form	Liquid or Lyophilized powder
Storage Buffer	If the delivery form is liquid, the default storage buffer is Tris/PBS-based buffer, 5%-50% glycerol. If the delivery form is lyophilized powder, the buffer before lyophilization is Tris/PBS-based buffer, 6% Trehalose, pH 8.0.
Product Type	Recombinant Arabidopsis thaliana Phosphatidylserine decarboxylase proenzyme 1, mitochondrial (PSD1)
Immunogen Species	Arabidopsis thaliana (Mouse-ear cress)
Sensitivity	Not Test
Purity	Greater than 85% as determined by SDS-PAGE.
Sequence	MKPRFPQNVYFLARYSYLRRFQHSQRRTFSSFLNNIRSNYSGARASPLGGSS GAGAGAGGGGTGDSKGN AFLVPGATMATILMLGALHARRLYEDKKIEEKREK GIELEFHPDIKASFLGVLPLRSISR AWGSFMSLEIPVWMPYAYKAWARAFHS NLEEAALPLEEYTS LQDF FVRS LKEGCRPIDPDPCCLVSPVDGTVLRF GELKG NRGMIEQVKGHSYSVPALLGNNSLLPMEPEGKNESKEEAVGDKSDKSWLRVS LASPKLRENV SASPMKGLYYCVIYLKPGDYHRIHSPADWNATVRRHFAGRLFP VNERATR TIRNLY VENERVVLEGIWKEGFMALAAVGATNIGSIELFIEPELRTNK PKKKLFPTEPPEERVYDPEGLGLRLEKKGKEVAVFNMGSTVVLIFQAPTANTPE GSSSSSDYRFCVKQGDRVRVGQALGRWKEE
Research Area	Others
Source	E.coli
Target Names	PSD1
Expression Region	1-453aa
Notes	Repeated freezing and thawing is not recommended. Store working aliquots at 4°C for up to one week.
Tag Info	C-terminal 6xHis-tagged
Mol. Weight	57.5 kDa

**Protein Length****Full Length****Image**

(Tris-Glycine gel) Discontinuous SDS-PAGE (reduced) with 5% enrichment gel and 15% separation gel.

Reconstitution

We recommend that this vial be briefly centrifuged prior to opening to bring the contents to the bottom. Please reconstitute protein in deionized sterile water to a concentration of 0.1-1.0 mg/mL. We recommend to add 5-50% of glycerol (final concentration) and aliquot for long-term storage at -20°C/-80°C. Our default final concentration of glycerol is 50%. Customers could use it as reference.

Shelf Life

The shelf life is related to many factors, storage state, buffer ingredients, storage temperature and the stability of the protein itself. Generally, the shelf life of liquid form is 6 months at -20°C/-80°C. The shelf life of lyophilized form is 12 months at -20°C/-80°C.