



# Recombinant Human Origin recognition complex subunit 1 (ORC1)

|                          |  |
|--------------------------|--|
| <b>Product Code</b>      | CSB-EP621667HU(A4)c7   |
| <b>Abbreviation</b>      | Recombinant Human ORC1 protein   |
| <b>Storage</b>           | The shelf life is related to many factors, storage state, buffer ingredients, storage temperature and the stability of the protein itself. Generally, the shelf life of liquid form is 6 months at -20°C/-80°C. The shelf life of lyophilized form is 12 months at -20°C/-80°C.  |
| <b>Uniprot No.</b>       | Q13415   |
| <b>Form</b>              | Liquid or Lyophilized powder   |
| <b>Storage Buffer</b>    | If the delivery form is liquid, the default storage buffer is Tris/PBS-based buffer, 5%-50% glycerol. If the delivery form is lyophilized powder, the buffer before lyophilization is Tris/PBS-based buffer, 6% Trehalose, pH 8.0.   |
| <b>Product Type</b>      | Recombinant Human Origin recognition complex subunit 1 (ORC1)  |
| <b>Immunogen Species</b> | Homo sapiens (Human)   |
| <b>Sensitivity</b>       | Not Test   |
| <b>Purity</b>            | Greater than 85% as determined by SDS-PAGE.  |
| <b>Sequence</b>          | MAHYPTRLKTRKTYSWVGRPLLDRKLHYQTYREMCVKTEGCSTEIHIQIGQFV<br>LIEGDDDENPYVAKLLELFEDDSDPPPKKRARVQWFVRFCEVPACKRHLLGRK<br>PGAQEIFWYDYPACDSNINAETIIGLVRVIPLAPKDVVPTNLKNEKTLFVKLSWN<br>EKKFRPLSSELFaelnkpQESAakCQKPVRAKSKSAESPSWTPAEHVAKRIES<br>RHSASKSRQTPTHPLTPRARKRLELGNLGNPQMSQQTSCASLDSPGRIKRKV<br>AFSEITSPSKRSQPKLQTLSPALKAPEKTRETGLSYTEDDKKASPEHRILRTR<br>IAASKTIDIREERTLTPISGGQRSSVPSVILKPENIKKRDAKEAKAQNEATSTPH<br>RIRRKSSVLTMNRIRQQLRFLGNSKSDQEEKEILPAAEISDSSSDEEEASTPPL<br>PRRAPRTVSRNLRSSLKSSLHTLTKVPKSLKPRTPRCAAPQIRSRSLAAQEP<br>ASVLEEARLRLHVSAPPELPCREQEFQDIYNFVESKLLDHTGGCMYISGVPG<br>TGKTATVHEVIRCLQQAQANDVPPFYIEVNGMKLTEPHQVYVQILQKLTGQ<br>KATANHAAELLAKQFCTRGSPQETTLLVDEL DLLWTHKQDIMYNLFDWPTHK<br>EARLVVLAiantMDLPERIMMNRVSSRLGLTRMCFQPYTYSQLQQLRSRLKHL<br>KAFEDDAIQLVARKVAALSGDARRCLDICRRATEICEFSQQKPDSPGLVTIAHS<br>MEAVDEMfSSSYITAIKNSSVLEQSFLRAILAEFRRSGLLEEATFQQIYSQHVALC<br>RMEGLPYPTMSETMAVCSHLGSCRLLLVEPSRNDLLLRVRLNVSQDDVLYALK<br>DE |
| <b>Research Area</b>     | Others   |
| <b>Source</b>            | E.coli   |
| <b>Target Names</b>      | ORC1   |
| <b>Expression Region</b> | 1-861aa  |
| <b>Notes</b>             | Repeated freezing and thawing is not recommended. Store working aliquots at  |



4°C for up to one week.

**Tag Info**

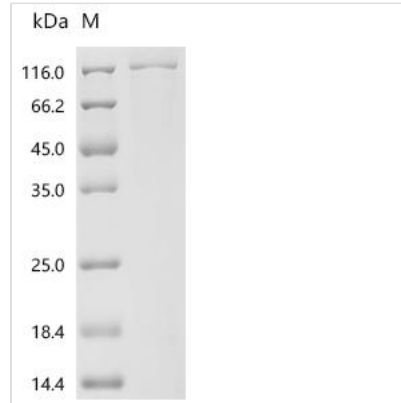
C-terminal 6xHis-tagged

**Mol. Weight**

104.3 kDa

**Protein Length**

Full Length

**Image**

(Tris-Glycine gel) Discontinuous SDS-PAGE (reduced) with 5% enrichment gel and 15% separation gel.

**Reconstitution**

We recommend that this vial be briefly centrifuged prior to opening to bring the contents to the bottom. Please reconstitute protein in deionized sterile water to a concentration of 0.1-1.0 mg/mL. We recommend to add 5-50% of glycerol (final concentration) and aliquot for long-term storage at -20°C/-80°C. Our default final concentration of glycerol is 50%. Customers could use it as reference.

**Shelf Life**

The shelf life is related to many factors, storage state, buffer ingredients, storage temperature and the stability of the protein itself. Generally, the shelf life of liquid form is 6 months at -20°C/-80°C. The shelf life of lyophilized form is 12 months at -20°C/-80°C.