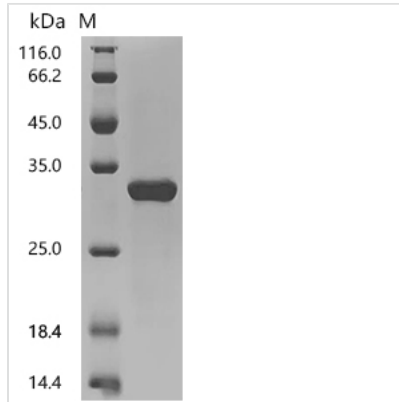


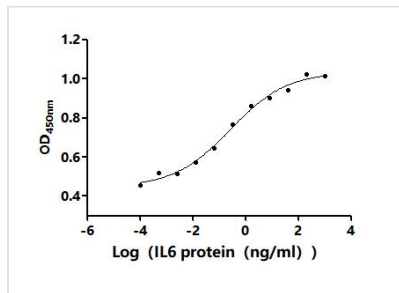


Recombinant *Macaca fascicularis* Interleukin-6 (IL6) (Active)

Product Code	CSB-EP305249MOV
Abbreviation	Recombinant Cynomolgus monkey IL6 protein (Active)
Storage	The shelf life is related to many factors, storage state, buffer ingredients, storage temperature and the stability of the protein itself. Generally, the shelf life of liquid form is 6 months at -20°C/-80°C. The shelf life of lyophilized form is 12 months at -20°C/-80°C.
Uniprot No.	P79341
Form	Lyophilized powder
Storage Buffer	Lyophilized from a 0.2 µm sterile filtered PBS, 6% Trehalose, pH 7.4
Product Type	Recombinant Protein
Immunogen Species	<i>Macaca fascicularis</i> (Crab-eating macaque) (Cynomolgus monkey)
Biological Activity	The ED50 as determined by the dose-dependent stimulation of the proliferation of human TF-1 cells is 0.1146-0.6220 ng/mL.
Purity	Greater than 95% as determined by SDS-PAGE.
Sequence	APVLPGEDSKDVAAPHSQPLTSSERIDKHIRYILDGISALRKETCNRSNMCESS KEALAENNLNLPKMAEKDGCQSGFNEDTCLVKIITGLLEFEVYLEYLQNRFS SEEQARAVQMSTKVLIQFLQKKAKNLDAITTPEPTTNASLLTKLQAQNQWLQD MTTHLILRSFKEFLQSSLRALRQM
Source	E.coli
Target Names	IL6
Expression Region	28-212aa
Notes	Repeated freezing and thawing is not recommended. Store working aliquots at 4°C for up to one week.
Tag Info	C-terminal 6xHis-tagged
Mol. Weight	27.9 kDa
Protein Length	Full Length of Mature Protein
Image	



(Tris-Glycine gel) Discontinuous SDS-PAGE (reduced) with 5% enrichment gel and 15% separation gel.



Activity

The ED₅₀ as determined by the dose-dependent stimulation of the proliferation of human TF-1 cells is 0.1146-0.6220 ng/mL.

Endotoxin

Less than 1.0 EU/ug as determined by LAL method.

Reconstitution

We recommend that this vial be briefly centrifuged prior to opening to bring the contents to the bottom. Please reconstitute protein in deionized sterile water to a concentration of 0.1-1.0 mg/mL. We recommend to add 5-50% of glycerol (final concentration) and aliquot for long-term storage at -20°C/-80°C. Our default final concentration of glycerol is 50%. Customers could use it as reference.

Shelf Life

The shelf life is related to many factors, storage state, buffer ingredients, storage temperature and the stability of the protein itself.

Generally, the shelf life of liquid form is 6 months at -20°C/-80°C. The shelf life of lyophilized form is 12 months at -20°C/-80°C.