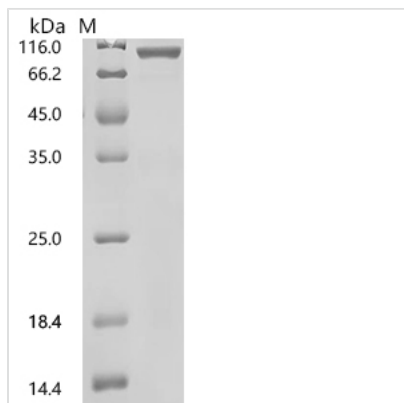


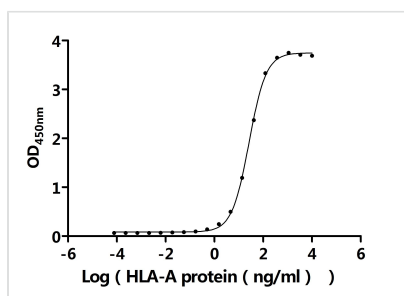


Recombinant Human HLA-A*02:01&B2M&NY-ESO-1 (SLLMWITQV) Protein ,Biotinylated (Active)

Product Code	CSB-MP6862HU(M1)-B
Abbreviation	Recombinant Human HLA-A*02:01&B2M&NY-ESO-1 (SLLMWITQV) Protein ,Biotinylated (Active)
Storage	The shelf life is related to many factors, storage state, buffer ingredients, storage temperature and the stability of the protein itself. Generally, the shelf life of liquid form is 6 months at -20?/-80?. The shelf life of lyophilized form is 12 months at -20?/-80?.
Uniprot No.	P61769&A0A140T913
Form	Lyophilized powder
Storage Buffer	Lyophilized from a 0.2 µm sterile filtered PBS, 6% Trehalose, pH 7.4
Product Type	Recombinant Protein
Immunogen Species	Homo sapiens (Human)
Biological Activity	①Measured by its binding ability in a functional ELISA. Immobilized Anti-HLA-A*02:01 & B2M & NY-ESO-1 (SLLMWITQV) Recombinant Antibody (CSB-RA3499MA1HU) at 2 µg/mL can bind Human HLA-A*02:01 & B2M & NY-ESO-1 (SLLMWITQV). The EC50 is 25.19-27.64 ng/mL.
Purity	Greater than 90% as determined by SDS-PAGE.
Sequence	It contains Gly25-Pro307(Y108C)(HLA-A*02:01), Ile21-Met119(B2M) and SLLMWITQV peptide (Accession#A0A140T913(HLA-A*02:01)&P61769(B2M)&SLLMWITQV)
Source	Mammalian cell
Target Names	B2M&HLA-A*02?01
Expression Region	1-406aa
Notes	Repeated freezing and thawing is not recommended. Store working aliquots at 4? for up to one week.
Tag Info	C-terminal 7xHis-Avi-mFc2a-tagged
Mol. Weight	79.3 kDa
Protein Length	Full Length
Image	



(Tris-Glycine gel) Discontinuous SDS-PAGE (reduced) with 5% enrichment gel and 15% separation gel.



Activity

Measured by its binding ability in a functional ELISA. Immobilized Anti-HLA-A*02:01 & B2M & NY-ESO-1 (SLLMWITQV) Recombinant Antibody (CSB-RA3499MA1HU) at 2 µg/ml can bind Human HLA-A*02:01 & B2M & NY-ESO-1 (SLLMWITQV). The EC₅₀ is 25.19-27.64 ng/mL.

Endotoxin

Less than 1.0 EU/ug as determined by LAL method.

Reconstitution

We recommend that this vial be briefly centrifuged prior to opening to bring the contents to the bottom. Please reconstitute protein in deionized sterile water to a concentration of 0.1-1.0 mg/mL. We recommend to add 5-50% of glycerol (final concentration) and aliquot for long-term storage at -20°C/-80°C. Our default final concentration of glycerol is 50%. Customers could use it as reference.

Shelf Life

The shelf life is related to many factors, storage state, buffer ingredients, storage temperature and the stability of the protein itself.

Generally, the shelf life of liquid form is 6 months at -20°C/-80°C. The shelf life of lyophilized form is 12 months at -20°C/-80°C.