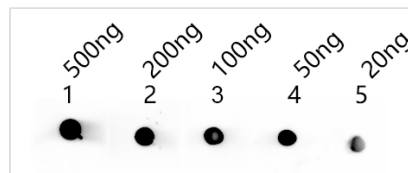




# MELT Antibody

<b>Product Code</b>	CSB-PA355665XA01DNK
<b>Storage</b>	Upon receipt, store at -20°C or -80°C. Avoid repeated freeze.
<b>Uniprot No.</b>	P01501
<b>Immunogen</b>	Recombinant Apis mellifera MELT protein (44-69aa)
<b>Raised In</b>	Rabbit
<b>Species Reactivity</b>	Apis mellifera (Honeybee)
<b>Tested Applications</b>	ELISA, DB; Recommended dilution: DB:1:500-1:5000
<b>Form</b>	Liquid
<b>Conjugate</b>	Non-conjugated
<b>Storage Buffer</b>	Preservative: 0.03% Proclin 300 Constituents: 50% Glycerol, 0.01M PBS, pH 7.4
<b>Purification Method</b>	Antigen Affinity Purified
<b>Isotype</b>	IgG
<b>Clonality</b>	Polyclonal
<b>Product Type</b>	Polyclonal Antibody
<b>Immunogen Species</b>	Apis mellifera (Honeybee)
<b>Target Names</b>	MELT

## Image



Dot blot analysis of peptides corresponding to the immunogen was probed with MELT antibody at a dilution of 1:1000. Blocking/Dilution buffer: 4% nonfat dry milk(NFDM)/PBS. Secondary antibody?Goat polyclonal to rabbit IgG at 1/40000 dilution Exposure time: 2s.

## Usage

For Research Use Only. Not for use in diagnostic or therapeutic procedures.