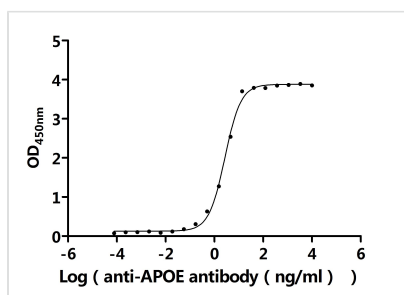




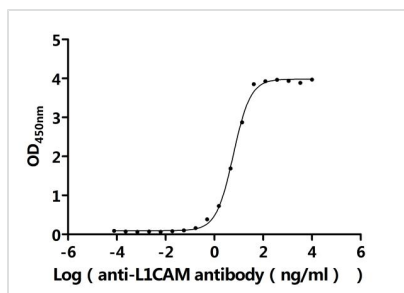
# L1CAM Recombinant Monoclonal Antibody

<b>Product Code</b>	CSB-RA012704MA1HU
<b>Storage</b>	Upon receipt, store at -20°C or -80°C. Avoid repeated freeze.
<b>Uniprot No.</b>	P32004
<b>Immunogen</b>	Recombinant Human L1CAM protein
<b>Species Reactivity</b>	Human, Mouse, Macaca mulatta
<b>Tested Applications</b>	ELISA, WB, IHC, FC; Recommended dilution: ELISA:1:5000-1:50000, WB:1:500-1:2000, IHC:1:50-1:200, FC:1:50-1:200
<b>Form</b>	Liquid
<b>Conjugate</b>	Non-conjugated
<b>Storage Buffer</b>	Preservative: 0.03% Proclin 300 Constituents: 50% Glycerol, 0.01M PBS, PH 7.4
<b>Purification Method</b>	Affinity-chromatography
<b>Isotype</b>	hIgG1
<b>Clonality</b>	Monoclonal
<b>Product Type</b>	Recombinant Antibody
<b>Immunogen Species</b>	Homo sapiens (Human)
<b>Target Names</b>	L1CAM
<b>Clone No.</b>	Ab2c2

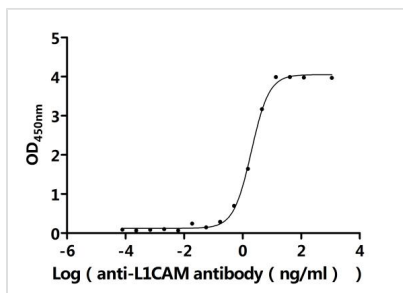
## Image



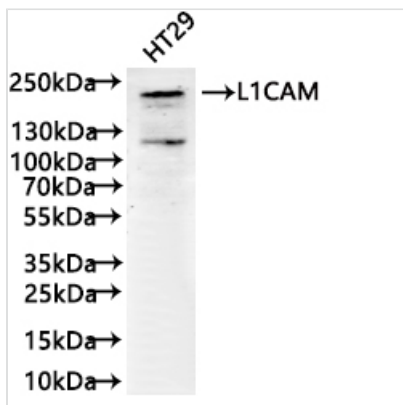
The Binding Activity of Macaca fascicularis L1CAM with Anti-L1CAM recombinant antibody  
Activity: Measured by its binding ability in a functional ELISA. Immobilized Macaca fascicularis L1CAM(CSB-MP6775MOV) at 2  $\mu$ g/mL can bind Anti-L1CAM recombinant antibody. The  $EC_{50}$  is 1.496-1.709 ng/mL.



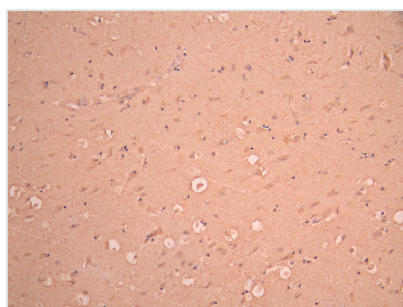
The Binding Activity of Human L1CAM with Anti-L1CAM recombinant antibody  
Activity: Measured by its binding ability in a functional ELISA. Immobilized Human L1CAM(CSB-MP012704HU1) at 2  $\mu$ g/mL can bind Anti-L1CAM recombinant antibody. The  $EC_{50}$  is 5.356-6.664 ng/mL.



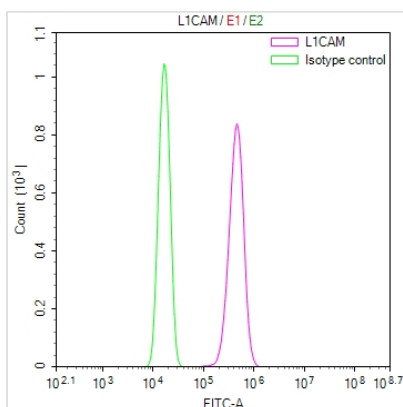
The Binding Activity of Mouse L1cam with Anti-L1CAM recombinant antibody  
 Activity: Measured by its binding ability in a functional ELISA. Immobilized Mouse L1cam(CSB-MP012704MO) at 2 µg/mL can bind Anti-L1CAM recombinant antibody. The EC<sub>50</sub> is 1.827-2.141 ng/mL.



Western Blot  
 Positive WB detected in: HT29 whole cell lysate(30µg)  
 All lanes: L1CAM antibody at 1:1000  
 Secondary  
 Goat polyclonal to human IgG at 1/40000 dilution  
 Predicted band size: 140 kDa  
 Observed band size: 200 kDa  
 Exposure time: 2min



IHC image of CSB-RA012704MA1HU diluted at 1:50 and staining in paraffin-embedded human brain tissue performed on a Leica Bond™ system. After dewaxing and hydration, antigen retrieval was mediated by high pressure in a citrate buffer (pH 6.0). Section was blocked with 10% normal goat serum 30min at RT. Then primary antibody (1% BSA) was incubated at 4°C overnight. The primary is detected by a Anti-Human IgG, Fcγ Fragment Specific labeled by HRP and visualized using 0.05% DAB.



Overlay Peak curve showing Hela cells stained with CSB-RA012704MA1HU (red line) at 1:100. The cells were fixed in 4% formaldehyde and permeated by 0.2% TritonX-100 for 10min. Then 10% normal goat serum to block non-specific protein-protein interactions followed by the antibody (1ug/1\*10<sup>6</sup>cells) for 45min at 4?. The secondary antibody used was Fluorescein (FITC) AffiniPure Goat Anti-Human IgG, Fcγ fragment specific at 1:200 dilution for 35 min at 4?. Control antibody (green line) was human IgG1a (1ug/1\*10<sup>6</sup>cells) used under the same conditions. Acquisition of >10,000 events was performed.

## Usage

For Research Use Only. Not for use in diagnostic or therapeutic procedures.