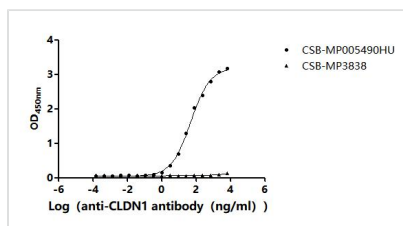




# CLDN1 Recombinant Monoclonal Antibody

<b>Product Code</b>	CSB-RA005490MA1HU
<b>Storage</b>	Upon receipt, store at -20°C or -80°C. Avoid repeated freeze.
<b>Uniprot No.</b>	O95832
<b>Immunogen</b>	Recombinant Human CLDN1 protein
<b>Species Reactivity</b>	Human
<b>Tested Applications</b>	ELISA; Recommended dilution: ELISA:1:5000-1:50000
<b>Form</b>	Liquid
<b>Conjugate</b>	Non-conjugated
<b>Storage Buffer</b>	Preservative: 0.03% Proclin 300 Constituents: 50% Glycerol, 0.01M PBS, PH 7.4
<b>Purification Method</b>	Affinity-chromatography
<b>Isotype</b>	hIgG1
<b>Clonality</b>	Monoclonal
<b>Product Type</b>	Recombinant Antibody
<b>Immunogen Species</b>	Homo sapiens (Human)
<b>Target Names</b>	CLDN1
<b>Clone No.</b>	12A4

## Image



The Binding Activity of Human CLDN1 with Anti-CLDN1 Recombinant antibody  
Activity: Measured by its binding ability in a functional ELISA. Immobilized Human CLDN1 (CSB-MP005490HU) at 10 µg/mL can bind Anti-CLDN1 recombinant antibody. The EC<sub>50</sub> is 35.03-50.71 ng/mL. The VLPs (CSB-MP3838) is negative control.

## Usage

For Research Use Only. Not for use in diagnostic or therapeutic procedures.