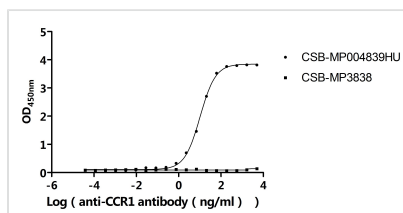




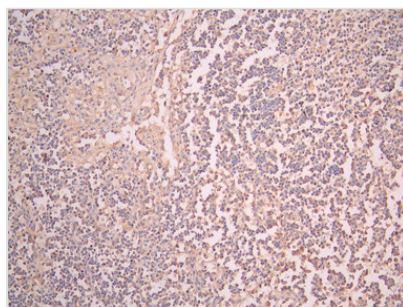
# CCR1 Recombinant Monoclonal Antibody

<b>Product Code</b>	CSB-RA004839MA1HU
<b>Storage</b>	Upon receipt, store at -20°C or -80°C. Avoid repeated freeze.
<b>Uniprot No.</b>	P32246
<b>Immunogen</b>	Recombinant Human CCR1 protein
<b>Species Reactivity</b>	Human
<b>Tested Applications</b>	ELISA, IHC; Recommended dilution: ELISA:1:5000-1:50000, IHC:1:50-1:200
<b>Form</b>	Liquid
<b>Conjugate</b>	Non-conjugated
<b>Storage Buffer</b>	Preservative: 0.03% Proclin 300 Constituents: 50% Glycerol, 0.01M PBS, PH 7.4
<b>Purification Method</b>	Affinity-chromatography
<b>Isotype</b>	hIgG1
<b>Clonality</b>	Monoclonal
<b>Product Type</b>	Recombinant Antibody
<b>Immunogen Species</b>	Homo sapiens (Human)
<b>Target Names</b>	CCR1
<b>Clone No.</b>	15B4

## Image



The Binding Activity of Human CCR1 with Anti-CCR1 Recombinant antibody  
Activity: Measured by its binding ability in a functional ELISA. Immobilized Human CCR1(CSB-MP004839HU) at 10 µg/mL can bind Anti-CCR1 recombinant antibody. The EC<sub>50</sub> is 9.690-10.94 ng/mL. The VLPs (CSB-MP3838) is negative control.



IHC image of CSB-RA004839MA1HU diluted at 1:50 and staining in paraffin-embedded human lymph node tissue performed on a Leica Bond™ system. After dewaxing and hydration, antigen retrieval was mediated by high pressure in a citrate buffer (pH 6.0). Section was blocked with 10% normal goat serum 30min at RT. Then primary antibody (1% BSA) was incubated at 4°C overnight. The primary is detected by a Anti-Human IgG, Fcy Fragment Specific labeled by HRP and visualized using 0.05% DAB.

## Usage

For Research Use Only. Not for use in diagnostic or therapeutic procedures.