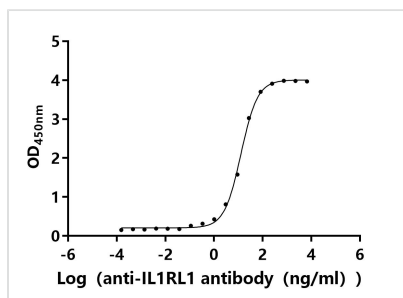




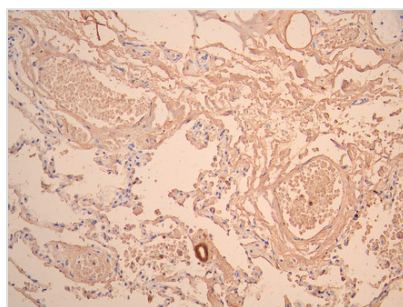
IL1RL1 Recombinant Monoclonal Antibody

| | |
|----------------------------|--|
| Product Code | CSB-RA011626MA2HU |
| Storage | Upon receipt, store at -20°C or -80°C. Avoid repeated freeze. |
| Uniprot No. | Q01638 |
| Immunogen | Recombinant Human IL1RL1 protein |
| Species Reactivity | Human |
| Tested Applications | ELISA, IHC; Recommended dilution: ELISA:1:5000-1:50000, IHC:1:50-1:200 |
| Form | Liquid |
| Conjugate | Non-conjugated |
| Storage Buffer | Preservative: 0.03% Proclin 300 Constituents: 50% Glycerol, 0.01M PBS, PH 7.4 |
| Purification Method | Affinity-chromatography |
| Isotype | hIgG1 |
| Clonality | Monoclonal |
| Product Type | Recombinant Antibody |
| Immunogen Species | Homo sapiens (Human) |
| Target Names | IL1RL1 |
| Clone No. | 9H3 |

Image



The Binding Activity of Human IL1RL1 with Anti-IL1RL1 recombinant antibody
Activity: Measured by its binding ability in a functional ELISA. Immobilized Human IL1RL1 (CSB-MP011626HU) at 2 µg/mL can bind Anti-IL1RL1 recombinant antibody. The EC₅₀ is 11.85-13.96 ng/mL.



IHC image of CSB-RA011626MA2HU diluted at 1:50 and staining in paraffin-embedded human lung tissue performed on a Leica Bond™ system. After dewaxing and hydration, antigen retrieval was mediated by high pressure in a citrate buffer (pH 6.0). Section was blocked with 10% normal goat serum 30min at RT. Then primary antibody (1% BSA) was incubated at 4°C overnight. The primary is detected by a Anti-Human IgG, Fcγ Fragment Specific labeled by HRP and visualized using 0.05% DAB.

Usage

For Research Use Only. Not for use in diagnostic or therapeutic procedures.