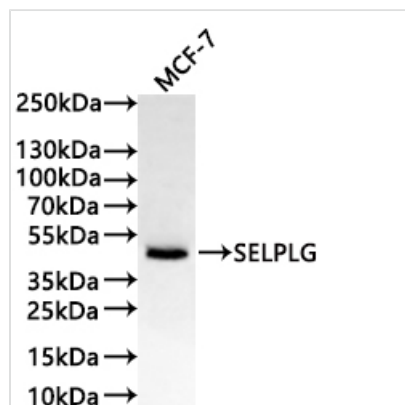




SELPLG Recombinant Monoclonal Antibody

Product Code	CSB-RA621767MA1HU
Storage	Upon receipt, store at -20°C or -80°C. Avoid repeated freeze.
Uniprot No.	Q14242
Immunogen	Recombinant Human SELPLG protein
Species Reactivity	Human
Tested Applications	ELISA, WB; Recommended dilution: WB:1:500-1:2000
Form	Liquid
Conjugate	Non-conjugated
Storage Buffer	Preservative: 0.03% Proclin 300 Constituents: 50% Glycerol, 0.01M PBS, PH 7.4
Purification Method	Affinity-chromatography
Isotype	hIgG4
Clonality	Monoclonal
Product Type	Recombinant Antibody
Immunogen Species	Homo sapiens (Human)
Target Names	SELPLG
Clone No.	18F4

Image



Western Blot

Positive WB detected in: MCF-7 whole cell lysate(30µg)

All lanes: SELPLG antibody at 1:1000

Secondary

Goat polyclonal to human IgG at 1/40000 dilution

Predicted band size: 43 kDa

Observed band size: 43 kDa

Exposure time: 2min

Usage

For Research Use Only. Not for use in diagnostic or therapeutic procedures.