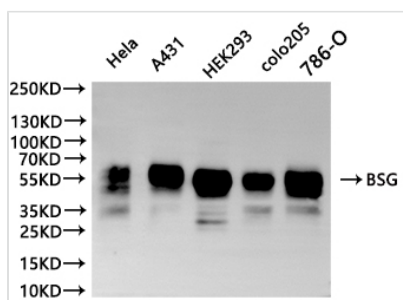




BSG Recombinant Monoclonal Antibody

Product Code	CSB-RA002831MA1HU
Storage	Upon receipt, store at -20°C or -80°C. Avoid repeated freeze.
Uniprot No.	P35613
Immunogen	Recombinant Human BSG protein
Species Reactivity	Human
Tested Applications	ELISA, WB, IHC, FC; Recommended dilution: WB:1:500-1:2000, IHC:1:50-1:200, FC:1:50-1:200
Form	Liquid
Conjugate	Non-conjugated
Storage Buffer	Preservative: 0.03% Proclin 300 Constituents: 50% Glycerol, 0.01M PBS, PH 7.4
Purification Method	Affinity-chromatography
Isotype	hIgG1
Clonality	Monoclonal
Product Type	Recombinant Antibody
Immunogen Species	Homo sapiens (Human)
Target Names	BSG
Clone No.	31H4

Image



Western Blot

Positive WB detected in: HeLa whole cell lysate(30µg), A431 whole cell lysate(30µg), HEK293 whole cell lysate(30µg), colo205 whole cell lysate(30µg), 786-O whole cell lysate(30µg)
All lanes: BSG antibody at 1:1000

Secondary

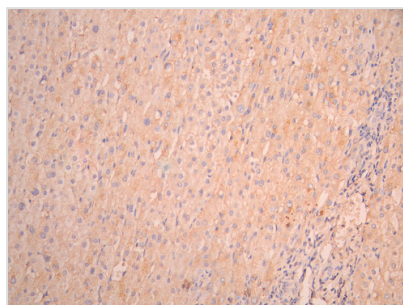
Goat polyclonal to human IgG at 1/40000 dilution

Predicted band size:

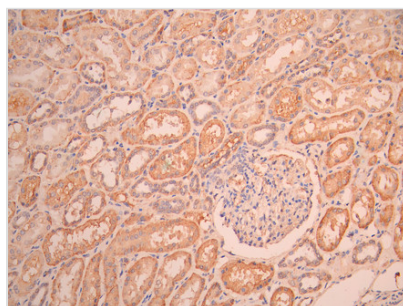
42.200,29.221,19.438,22.764 kDa

Observed band size: 55 kDa

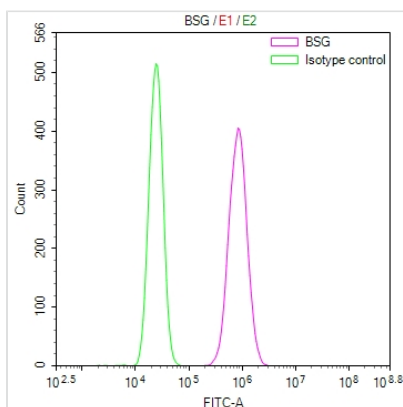
Exposure time: 120s



IHC image of CSB-RA002831MA1HU diluted at 1:50 and staining in paraffin-embedded human liver cancer performed on a Leica Bond™ system. After dewaxing and hydration, antigen retrieval was mediated by high pressure in a citrate buffer (pH 6.0). Section was blocked with 10% normal goat serum 30min at RT. Then primary antibody (1% BSA) was incubated at 4°C overnight. The primary is detected by a Anti-Human IgG, Fcγ Fragment Specific labeled by HRP and visualized using 0.05% DAB.



IHC image of CSB-RA002831MA1HU diluted at 1:50 and staining in paraffin-embedded human kidney tissue performed on a Leica Bond™ system. After dewaxing and hydration, antigen retrieval was mediated by high pressure in a citrate buffer (pH 6.0). Section was blocked with 10% normal goat serum 30min at RT. Then primary antibody (1% BSA) was incubated at 4°C overnight. The primary is detected by a Anti-Human IgG, Fcγ Fragment Specific labeled by HRP and visualized using 0.05% DAB.



Overlay Peak curve showing 786-O cells stained with CSB-RA002831MA1HU (red line) at 1:100. The cells were fixed in 4% formaldehyde and permeated by 0.2% TritonX-100 for 10min. Then 10% normal goat serum to block non-specific protein-protein interactions followed by the antibody (1ug/1*10⁶cells) for 45min at 4?. The secondary antibody used was Fluorescein (FITC) AffiniPure Goat Anti-Human IgG, Fcγ fragment specific at 1:200 dilution for 35min at 4?. Control antibody (green line) was human IgG1 (1ug/1*10⁶cells) used under the same conditions. Acquisition of >10,000 events was performed.

Usage

For Research Use Only. Not for use in diagnostic or therapeutic procedures.