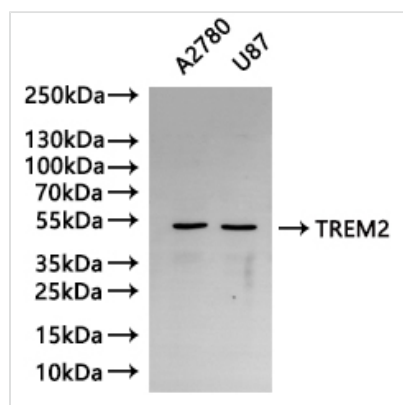




TREM2 Recombinant Monoclonal Antibody

Product Code	CSB-RA024405MA5HU
Storage	Upon receipt, store at -20°C or -80°C. Avoid repeated freeze.
Uniprot No.	Q9NZC2
Immunogen	Recombinant Human TREM2 protein
Species Reactivity	Human
Tested Applications	ELISA, WB, IF; Recommended dilution: WB:1:500-1:2000, IF:1:50-1:200
Form	Liquid
Conjugate	Non-conjugated
Storage Buffer	Preservative: 0.03% Proclin 300 Constituents: 50% Glycerol, 0.01M PBS, PH 7.4
Purification Method	Affinity-chromatography
Isotype	hIgG1
Clonality	Monoclonal
Product Type	Recombinant Antibody
Immunogen Species	Homo sapiens (Human)
Target Names	TREM2
Clone No.	22E5

Image

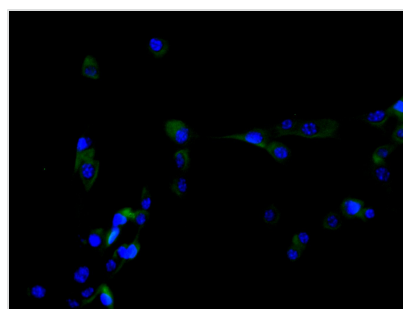


Western Blot

Positive WB detected in: A2780 whole cell lysate(30µg),U87 whole cell lysate(30µg)
All lanes: TREM2 antibody at 1:1000

Secondary

Goat polyclonal to human IgG at 1/40000 dilution
Predicted band size: 25.447,24.328,24,669 kDa
Observed band size: 50 kDa
Exposure time: 120s



Immunofluorescence staining of NIH/3T3 cell with CSB-RA024405MA5HU at 1:30 ,counter-stained with DAPI. The cells were fixed in 4% formaldehyde and blocked in 10% normal Goat Serum. The cells were then incubated with the antibody overnight at 4°C. The secondary antibody was Fluorescein (FITC) AffiniPure Goat Anti-Human IgG, Fcγ fragment specific.



Usage

For Research Use Only. Not for use in diagnostic or therapeutic procedures.